

WEATHER

	Min.	Max.	Precip.
Thursday, Feb. 22	29	35	0.00
Friday, Feb. 23	30	37	0.00
Saturday, Feb. 24	26	35	0.00
Sunday, Feb. 25	18	23	0.00
Monday, Feb. 26	19	31	0.00
Tuesday, Feb. 27	21	43	0.00
Wednesday, Feb. 28	22	46	0.00

ONE HUNDRED-NINTH YEAR—No. 38

12 Pages This Week Plus Tab Supplement

CHELSEA, MICHIGAN, THURSDAY, MARCH 1, 1979

15c per copy

SUBSCRIPTION: \$6.00 PER YEAR

The Chelsea Standard

QUOTE

"Man is a noble animal, splendid in ashes and pompous in the grave."
—Sir Thomas Browne.

Two Wrestlers Qualify for State Tourney

Chelsea varsity wrestlers again came through in the heat of tough competition in regional action last week.

For the 13th consecutive year Chelsea has qualified grapplers for the state finals to be held Friday and Saturday, March 2-3 in Mt. Pleasant at 11:30 a.m. in the Rose arena.

This year Alan Augustine and Chuck Young will compete in the state finals. Alan, at 191 lbs., came from behind in his first match to pin the Monroe opponent. He then went up against the regional champ, an undefeated wrestler from Warren Fitzgerald, Augustine wrestled to a 9-8 lead with 10 seconds remaining when the opponent was disqualified for going off the mat. In the finals, Augustine led his Clason oppo-

nent, 2-0, into the middle of the third period before being caught in a cradle and pinned. He placed second over-all.

Chuck Young's road to the state match was tougher as he defeated his first opponent from Dearborn Heights, 6-2. In his second match, Young took a tough 5-4 loss to Tecumseh. He then came back to defeat Hollister of Dexter in overtime, 3-1, with a takedown at the very end. During the final match, Young won, 2-1, over Madison Heights to finish third over-all.

Chelsea placed 11th in the regionals which was won by Avondale. Bart Bauer and John Whitaker completed their wrestling seasons during the regionals with both grapplers posting fine records. Bauer ended with 26-12 and Whitaker, 24-7.

Lenten Series Scheduled on Wednesdays

A five-part community Lenten program, sponsored jointly by the Chelsea Ministerial Fellowship and the churches of the Chelsea area, will begin on Wednesday, March 7 at St. Barnabas Episcopal church. On each of the four following Wednesdays the program will be held in a different church. Services will begin at 7:30 p.m. and last approximately two hours. The service will be followed by tea, coffee and a brief discussion of the tradition of that church.

North Lake Methodist will host the service on March 14; Congregational church on March 21; Zion Lutheran church on March 28; and the First United Methodist church on April 4.

Members of these churches as well as the public are invited to participate.

Varsity Swim Team Closes 12-2 Season

Chelsea High school boys' varsity swim team concluded their dual meet season with a splash as they ran Class B Willow Run out of the pool, 46-38.

It was the second time in a week the Bulldogs defeated the 7th ranked team and the victory gave Chelsea a 12-2 season record. During the season Chelsea took losses from second-ranked Milan and 10th-ranked class A Monroe High school.

Bulldogs are taking a medley relay, freestyle relay, and swimmers in the 200-yard IM, 50-yard freestyle, diving, 500-yard freestyle, and backstroke to the state meet on March 11. There are several other possible swimmers as well, according to Coach Larry Reed.

The Chelsea Invitational will be held Saturday, March 3. Diving begins at 10 a.m. with preliminaries at 1 p.m. and the finals at 6 p.m.

Frank Abdon Observes 97th Birthday

Frank E. Abdon, 447 Railroad St., quietly observed his 97th birthday Monday, Feb. 26. On Sunday, Feb. 25 family members surprised him by dropping in with a birthday cake, presents and cards.

Among his many descendants is 4-month-old great-great-grandson, Frank Abdon Pierce of Langsville, O.

Mr. Abdon was born in 1882 in Greenup county, Ky. He has lived in the Chelsea area since 1901.

Chelsea Students' Art Work on Display at EMU

Between 70 and 100 pieces of the best student art work from Chelsea's elementary, middle, and high schools will be displayed at the Eastern Michigan University art gallery on campus beginning Sunday, March 4 until March 21.

Chelsea is only one of three school districts in the area invited to participate in the exhibit by Charles Fensch, professor of art education at EMU.

Art teachers Pat Smith from North and South school; Judy Parker and Bev Yelsik from Beach Middle school; and Cathy Opoka and Mimi Luckham from the high school have selected the finest student work from a wide variety of one and two-dimensional mediums.

Students, parents, and interested Chelsea residents are invited to the opening reception of the show (Continued on page three)

Baseball, Softball Director Positions Need To Be Filled

Chelsea Recreation Department is now accepting applications for the part-time positions of Youth Baseball director and Adult Softball director for the summer programs.

Duties include organizing and co-ordinating the league schedule. Both men and women are invited to apply for the paid positions, according to Recreation Director Robin Raymond.

To apply, contact the Chelsea Community Education Department at 475-9830.



GOLD RATED FFA MEMBERS: Superb demonstrations in Parliamentary Procedure were performed by seven Chelsea FFA members during the regional competition held Feb. 22 in Waldron. In front, from left, are Shelly Hatt, vice-chairman; Becky Bollinger, chairman; and Cindy Welshans. In back, from left, are Bob Ball, Kent Bollinger, Mark Lessor, and Brian Koeple, secretary.



AG FORUM REGIONAL WINNERS: Six members of the Chelsea FFA captured the Silver Rating during competition held in Waldron on Feb. 22. In back, from left, are Debbie Harrison, chairman; and Candy Schinmacher. In front, from left, are Doug Burchett, Dave Harrison, and Bill Lamb. Missing from the photo is Debbie Steinaway.



FFA DEMONSTRATION LEADERSHIP members from left are Mark Machesky, Amy Unterbrink, and Colleen Hatt. Competing on the regional level after successful placing on the district level, these three earned a third-place rating. The contest was held Feb. 22 in Waldron.

7th Grade Cagers Place 2nd In Stockbridge Tournament

The 7th grade basketball team began play in the Stockbridge Tournament on Saturday, Feb. 17 with eight area teams competing. Competing in the tournament were Stockbridge, Milan, Fowlerville, Dansville, Leslie, Dexter, Mason, and Chelsea. The tournament was held in both the Stockbridge High school and Middle school gyms. Chelsea 7th graders drew Milan

as their opening opponent and defeated Milan, 30-23, in a well-played game that saw Milan draw to within two points in the third quarter, before Chelsea scored 10 unanswered points to put the game out of reach. David Lane led the team in scoring with 10 points, eight of which came in the second half. Glenn Prinzing and David Kipl controlled the boards for Chelsea while Charles Hager and Mar-

ty Steinbauer were outstanding on defense.

Chelsea played its second game of the tournament on Thursday, Feb. 22 against Fowlerville, who had defeated Leslie in its opening game. The 7th graders were again victorious in a tight defensive battle as Chelsea had trouble (Continued on page four)

Plan Unveiled To Enlarge Veterans Park

Special Projects and Grants Director Fred Barkley unveiled to Village Council members last week a plan to boost Chelsea's recreational facilities.

If successful, Barkley's project would add two softball fields, a parking lot, bleachers, and a restroom on 5.6 acres adjacent to the Veterans Park on N. M-52 and Sibley Rd.

While Barkley made the first pitch of his game plan to council members on Monday night, he has been working on the idea of expanding park facilities for several months including negotiations with Dana Corp., which currently owns the 5.6-acre parcel.

"The village has not yet received the final word from Dana on whether they will donate the land to us," Barkley said. When word is given to the village, Chelsea can then submit a pre-application to the Department of Natural Resources Bureau of Outdoor Recreation for funds to develop the land.

Total cost of the project is estimated at \$150,160 with the DNR and the village to split the price tag 50-50. Because the land is

valued at \$75,080, the village is requesting a matching amount from the DNR as their share.

"This is just a pre-application for the funds and there is no guarantee that we will get them," Barkley stated.

The DNR will review the pre-application along with others received from villages, towns, and cities from all over Michigan. "Those requests will be broken into priorities by the DNR and those with the greatest need will be approved," he explained.

Should Chelsea not qualify for any of the 1980-81 DNR funds, Barkley said that the village will still proceed with some work on the land "although it won't be as elaborate," he said.

Barkley cited a shortage of ball fields and a growing interest in softball in the village as the major reason for his plan. Currently there are only the school baseball fields open for recreational play. "With the expansion of this new park there will be two more fields on this side of town for use by the public and the Recreation Department," Barkley commented.

Cagers Dump Saline, 61-56, In Last Seconds

Varsity Bulldogs and Saline Hornets played a breathless game Friday, Feb. 23, nip and tuck all the way until Chelsea dropped six smooth free throws in the final 60 seconds for the 61-56 victory.

The win was Chelsea's 11th in their past 18 games.

The two squads tied the first quarter, 17-17, while Saline took a six-point lead early in the second stanza before Chelsea bounded back for a three-point advantage by half-time. Chelsea kept their three-point edge through the third quarter, a ho hum affair until things got hot in the fourth period.

As if it was a hot potato, Chelsea and Saline tossed the lead back and forth six times until only a minute and nine seconds remained on the clock. Don Schrotenboer jumped for a rebound and a 55-54 lead while Jeff Dils sank two perfect free throws and a 57-54 lead.

Throughout the game, Chelsea had kept its eyes on two Hornets. Mark James and John Kendricky, a 6'5" player who gets a lot of

balls on the inside. Mark averaged 19 points a game before meeting Chelsea but made only three field goals all night.

With 23 seconds to go, James hit for two free throws and brought the Hornets up to one point behind the Bulldogs, 57-56. Jeff Dils and Mike Machesky, however, took the hint and proceeded to dunk two free throws each for the winning edge.

Leading scorer for the Bulldogs was Jeff Dils with 16. Don Schrotenboer collected 12; Charlie Bridges, 10; Mike Machesky, eight; Gary Dils, seven; Jesse Coburn, six; and John Dunn, two. From the floor Chelsea shot 23 of 60 for 38 percent while Saline completed 19 of 39 for 49 percent.

Hornets also outpaced Chelsea from the free throw line, making 18 of 24 for 75 percent. Chelsea completed 15 of 23 for 66 percent.

Leading in rebounds for Chelsea were Don Schrotenboer and Charlie Bridges, each with eight.

Both teams chalked up 21 fouls but the Bulldogs accumulated only 12 turnovers to Saline's 19 and 21 steals to the Hornets' five.

Lumen Christi Zone Holds Off Bulldogs

John Dunn and Matt Feeney left the bench to score a total of 20 points for the lagging Bulldogs but a full court press by the Jackson Lumen Christi squad forced Chelsea into 12 turnovers the first half and a 69-61 defeat on Tuesday, Feb. 27.

"Jackson played very well. They are a good team and they hurt us with their zone defense," Chelsea Coach Robin Raymond commented.

One of the Bulldogs' largest drawbacks all season has been a slow start in the first half. "When we do get going it takes a double effort to play catch up and the game usually ends up with a close score," Raymond said.

On Tuesday, Bulldogs were outscored, 20-12, in the first quarter and 14-10 in the second. While the Jackson press was causing Chelsea turnovers, their offense hustled for nine offensive rebounds.

"We changed positions after half-time and broke their zone pass. We also held them to a single offensive rebound while improving our own rebounding. We made a good comeback but it wasn't quite enough," Raymond said.

Bulldogs outscored Jackson in the last two stanzas, 16-14 in the third and 23-21 in the fourth quarter.

From the floor, Chelsea completed 23 of 60 for 47 percent while Jackson, with 30 of 57, had 53 percent. Of the Bulldogs' five free throw attempts, five were successful for 100 percent while Jackson made nine of 16 for 56 percent.

Chelsea out-rebounded their opponents, 33 to 28, with 12 by Don Schrotenboer and nine by Charlie Bridges.

18 fouls were accumulated by the Bulldogs compared to a low nine for Jackson.

John Dunn, who came off the bench early in the game, accounted for 14 points, followed by Charlie Bridges with 13 and Jeff Dils with 12. Leaving the bench late in the game were Matt Feeney and Mike Killilea who both scored six points. Jesse Coburn and Don Schrotenboer added four each and Mike Machesky, two.

"Killilea did a nice job inside the lane where he got the ball three times, made two baskets and two free throws. I was very pleased." (Continued on page three)



CHELSEA LIONS CLUB kicked off its annual drive to collect used eyeglasses and hearing aids with the installation of a deposit receptacle at the Chelsea State Bank. Other locations for donating glasses and hearing aids are at Great Lakes Federal Savings, Chelsea Drug Store, and Huron Valley Optical. President Russ Severn and Lion Dale Cook are shown above placing one of the donation boxes. The used hearing aids and eyeglasses will be fitted for people around the world who otherwise would not be able to afford new ones. Sight and hearing conservation are primary projects of Lions International.

Established 1871 **The Chelsea Standard** Telephone 475-1371
Walter P. Leonard, Editor and Publisher
Excellence Awarded By Michigan Press Association
1951-1952-1960-1964-1965-1968



Published every Thursday morning at 300 North Main Street, Chelsea, Mich. 48118, and second class postage paid at Chelsea Mich., under the Act of March 3, 1879.

Subscription Rates (Payable in Advance)

In Michigan:	Outside Michigan:
Single Copies \$.20	Single Copies \$.25
Six Months \$3.50	Six Months \$4.50
One Year \$6.00	One Year \$8.50

MEMBER **NATIONAL NEWSPAPER ASSOCIATION - Founded 1888**
National Advertising Representative:
MICHIGAN NEWSPAPERS, INC.
257 Michigan Ave.
East Lansing, Mich. 48823

JUST REMINISCING

Items taken from the files of The Chelsea Standard

4 Years Ago...

Thursday, March 6, 1975--

The 89th celebration of World Day of Prayer will be observed tomorrow, March 7 at St. Mary Catholic church at 1 p.m. with a 1975 theme of "Become Perfectly One."

Jodi Daniels has been named Chelsea High school's 1975 recipient of the Good Citizen award presented by the Sarah Caswell Angell Chapter of the Daughters of the American Revolution (DAR). She is the daughter of Mr. and Mrs. Robert Daniels, 665 Washington St.

Honored during the annual Winter Sports Banquet were Howard Salyer, elected co-captain for next year's squad; Dave Alber, voted Most Valuable Player on the 1974-75 team; Dave Watson, Best Foul Shooter; Randy Davis, Most Improved Player for 1974-75; and Randy Guenther, elected Chelsea's other co-captain for next year.

A Checker Service Station attendant was robbed of more than \$600 last Thursday by a man who pulled a double-barreled shotgun on him, according to police reports.

"A wonderful day weather-wise and all ways," was enjoyed Feb. 23 by Chelseans who gathered in

Altoona, Fla., for the annual Chelsea Day, according to Mrs. Lulu Sweeney, one of the day's organizers.

14 Years Ago...

Thursday, March 11, 1965--

Chelsea voters turned out Monday in an election where only one trustee position was being contested and approved sale of liquor by the glass by an overwhelming majority of 350 to 157.

The annual meeting of the Chelsea Rod and Gun club was held Tuesday with Robert Bauer named as president.

A big birthday celebration is being planned by Legionnaires and the Auxiliaries of Herbert J. McKune Post No. 31 here in conjunction with the American Legion's 46th anniversary, March 15-17.

Mrs. Betty Dilloway, president of the Ann Arbor Women's Bowling Association, is its star bowler thus far. She is in first place in all-events with handicap in the 28th annual tournament now being held at Chelsea Lanes.

Mrs. Charles Trinkle reports that her husband's condition is much improved after the accident on the farm early Wednesday morning, March 3. In the accident Trinkle's leg became caught between the auger and a piece of angle iron on the silo which he had climbed to unplug the mechanism.

24 Years Ago...

Thursday, March 10, 1955--

William Schatz was elected president of the Chelsea Rod and Gun club at the regular meeting held Tuesday evening at the American Legion Home at Cavanaugh Lake.

Chelsea School Superintendent Charles Cameron has been officially notified that he has been appointed a member of the Michigan White House Conference Committee on Education.

Two Lima township rural school districts will be holding elections on the question of annexation to the Chelsea Agricultural Schools school district within the next week.

Jean Marie Young, daughter of Mr. and Mrs. Irwin Young, has been named "homemaker of tomorrow" at Chelsea High school. At the Boy Scout Court of Awards held Tuesday, March 1, in the Municipal Building, George Wilson received the Eagle Trails award as the outstanding Scout of the year in Troop 25. The award was presented by Richard Schneider, who instituted the new award.

34 Years Ago...

Thursday, March 8, 1945--

Although clocks in Michigan have been ordered turned back one hour on March 17 by legislative action, Chelsea will follow the lead of cities to the east and remain on Eastern War Time.

Pvt. Everett Carlton Chriswell, who has been in the Army nearly a year, returned to Chelsea on Sunday, having received his medical discharge from the armed forces.

Beginning last June, the Methodist church of Chelsea started raising money for renewing and redecorating the church. Now after many months of planning, working, giving, and waiting, the work is complete, and is ready for rededication.

MICHIGAN MIRROR

By Warren M. Hoyt, Secretary, Michigan Press Association

Wetlands Preservation Bill Has Improved Chance in Legislature

Environmentalists have improved hopes this year to win approval of legislation designed to protect the state's wetlands from elimination through development.

Such legislation would go only as far as the Senate Conservation Committee, where, then chairman Sen. Joseph S. Mack (D-Ironwood), would never let any so-called environmental bill out of the committee for debate on the Senate floor.

Mack, a supporter of the development of the Upper Peninsula to provide jobs for residents there, saw environmental legislation as an infringement on future development, and an attempt by the state to control uses of private property.

Such opposition to environmental legislation brought about Mack's removal as chairman of any standing committee considering such legislation.

Already both committees of the House and Senate have considered separate legislation dealing with the identification and preservation of the state's wetlands.

Major opposition continues to pour in from the agricultural community and fears continue that such legislation and the prohibition

using such designated lands could work against the agricultural community. Developers also fear the legislation could also deliver the final blow to an already staggering economy.

Experts estimate that during the past 100 years, some 60 to 75 percent of the state's natural wetlands have been eliminated. They are currently disappearing at a rate of 6,000 acres per year.

The legislation provides for a liberal definition of wetlands to include swamps, marshes, bogs and flood plains. It would prohibit a deposit or removal of materials from the designated areas, prohibit operating or maintaining any development in a wetland and prohibit draining surface water from such an area.

Environmentalists and legislative leaders feel the bill is so important to preserve these diminishing areas, that they are considering a method of compensating private owners for land so designated as it would be removed from production or development possibilities.

Battle Over Lobbyist Reporting

A collective sigh of relief went out from the legislature after a lobbyist registration and reporting bill was approved, but the bitter debate is not over as the first

public hearing on administrative rules opened in Lansing recently. Administrative rules set departmental policy in administering and enforcing legislation after it is signed into law.

Often, as it appears in the present case, rules are written by bureaucrats who completely change the legislative intent of an act. The rules ultimately have to be approved by a joint legislative committee which operates as a check on the rules-writing process.

The reaction to the rules, as it surfaced during the first public hearing on them, foreshadows a vigorous battle, similar to the original one staged in the legislature.

Meanwhile, the law will not become effective and enforceable until six months after the rules are adopted.

The act regulates activities of lobbyists who spend at least \$1,000 for lobbying purposes in a 12-month period or more than \$250 on a single official in that same period. Detailed records are required to be kept with quarterly filings with the Secretary of State's office.

Testimony, on behalf of a Committee to Protect the First Amendment Right to Lobby, declared the

Dexter Township Board Proceedings

Regular Meeting

Date: Tuesday, Feb. 20, 1979.

Place: Dexter Township Hall.
Present: John Tandy, Lorinda Jedele, William Eisenbeiser, Arlene Howe, John Miller.

Meeting called to order by the supervisor, John Tandy.

Minutes of the Feb. 6, 1979 meeting were read.

Moved by Howe, supported by Jedele, to accept the minutes as read. Carried.

Minutes of the Feb. 13, 1979 meeting were read.

Moved by Howe, supported by Jedele, to accept the minutes as read. Carried.

Moved by Eisenbeiser, supported by Jedele, to appoint Paul Peltes, Robert Eisele and Martin Ruhlwig

rules went far beyond the intent of the legislation.

A spokesperson for the group suggested anyone appearing before a committee, including private citizens, would have to have an accountant follow him around and report conversations, both personal and telephone, and time spent making suggestions.

The final answer will be given by the legislative committee, but it could take months before the rules are approved leaving the state, again, without a lobbyist control act.

to the Dexter Township Board of Review for a two-year term. Carried.

Moved by Miller, supported by Howe, to adopt an ordinance to establish the fiscal year of the Township of Dexter, Washtenaw County, Michigan and the annual Settlement Day for such Township pursuant to Michigan Public Act 536 of 1978.

The Fiscal Year to be April 1 to March 31. Ayes, 5: Howe, Miller, Jedele, Eisenbeiser, Tandy. Nays, 0. Carried.

Discussion with Road Commission was held.

Moved by Eisenbeiser, supported by Howe, to appoint Robert Burns as zoning inspector for Dexter Township. Defeated.

Moved by Eisenbeiser, supported by Jedele, to appoint Merritt Honbaum as Zoning Inspector for Dexter Township, effective March 1, 1979. Ayes, 4; Nays, 1. Carried.

Moved by Howe, supported by

Eisenbeiser, to adjourn the meeting. Carried.

Meeting adjourned.
Respectfully submitted,
William Eisenbeiser,
Dexter Township Clerk.

Veterans' reemployment rights cover National Guard members and reservists who request leaves of absence for military training, according to the U. S. Department of Labor.

FIRST ANNUAL

Chelsea Community Consignment Sale Saturday, April 7

Location:

Chelsea Fairgrounds

Large and small farm machinery and items, contractors, shop, lawn and garden tools, trucks, cars, and recreational items. Consignment auction. No household items.

Any questionable items call. For advertising purposes call before March 15, 313-475-7083

AUCTIONEER:

LOREN HELLER

Portion of commission goes toward new fairgrounds arena.

Everyone is welcome to bring these items.

SALVATION ARMY CHAPEL

Full Gospel, Holy Ghost, Believing Ministry.

SUNDAY — 1:30 p.m. to 3:30 p.m.
Wednesday — 7 p.m. to 9 p.m.

The Rev. Phillip Scott, Pastor

9 S. Park St. Ph. 482-4700

Uncle Lew from Lima Says:

DEAR MISTER EDITOR:

Clem Webster nailed Ed Doolittle good at the country store. Republican Ed carries a picture of Abe Lincoln in the back of his watch, and he is forever reminding the fellers that Ol' Abe, the father of his political party, said this and that on such and such matter. Ed likes to remind everybody that Abe was a straight shooter that believed in keeping Government spending in line, a day's work for a day's pay and so on down the list of what Ed believes.

Well, Saturday night Clem came in with this clipping where a letter Abe wrote after he lost a race for Congress had turned up in the family of the feller he wrote it to, and it propably worth more than \$100,000. That was news, Clem said, but what Abe was writing about was more good news. He wanted a good paying job with some federal agency, just like your everyday politician that gits his head to the trough and wants to stay there. The piece went on to say that if Abe had got the job and not gone back to Illinois to build political strength to be President our history might of been different more than somewhat.

Ed was not to be outdone, Mister Editor. He said we could just add the failure of Abe's application to the other failures that has played such a key role in our history. Ed listed them as the failure of the League of Nations, the failure of Harry Truman's clothing store in Kansas City, and the failure of the Cuban invasion. The only difference being, Ed declared, that Abe's failure worked out for the best. This brought a

protest from Clem, who allowed that Democrat Harry was a strong President that history is proving to be the right man at the right time. And Clem reminded that Abe wasn't the most popular feller around while he was in the White House.

Zeke Grubb swung the discussion from history to taxes. He had saw by the papers where in 1978 we paid 42 cent of ever dollar we earned in taxes. That compares, Zeke said, with 24 cent in 1948 and 30 cent 10 year ago. He said the report showed Americans worked from January 1 to June 2 last year to keep all their Governments going, and the rest of the year trying to keep their own heads above the rising waters of inflation caused by Government spending. Zeke said he allus had heard that the world's three biggest lies was "I'll respect you in the morning, your check's in the mail, and I'm from the Government and I'm here to help you." He said he is convinced the last one is the biggest.

Personal, Mister Editor, I go along with Josh Clodhopper's thinking that worrying about inflation and all the rest is like rocking. It gives you somepun to do but it don't git you anywhere. When I work up a good worry, though, I allus include the volunteer army. Right now I got problems at home. I was admiring the old lady's hat Sunday, and she huffed that it was the one I poked fun at last Easter that she was wearing inside out to see if I'd notice. I didn't find a way out.

Yours truly,
Uncle Lew.

COMMUNITY SERVICE THRU VISTA

Interested in helping improve the lot of America's poor? VISTA (Volunteers in Service To America) needs committed people to work in rural & urban areas. College degree desirable, but not necessary. Monthly living allowance, health benefits, \$900 stipend at end of one year of service.

Call (313) 226-7928 COLLECT.

SPRING TOVE SALE

SAVE UP TO \$100 ON OUR TIMBERLINE STOVES

USE OUR CONVERSION TABLE TO CALCULATE SAVINGS OVER YOUR PRESENT FUEL

(1) gallons of fuel oil	175	= Full Cord
(2) pounds of gas	1600	= Full Cord
(3) KWH of electricity	6500	= Full Cord
(4) gallons of propane	220	= Full Cord



LIFETIME GUARANTEE

ASCCO ALL-SEASON COMFORT CO.

Now Open 8 a.m. to 5 p.m. Mon. thru Sat.

Heating, Air Conditioning & Custom Sheet Metal Work

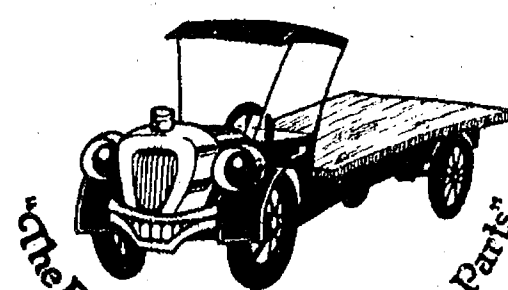
115 W. MIDDLE ST.
CHELSEA, MICH. 48118

(313) 475-7617

OPEN SUNDAYS

10 a.m. to 2 p.m.

COMPLETE STOCK OF PARTS For Cars, Trucks, and Vans



CHELSEA AUTOMOTIVE

1414 S. MAIN, CHELSEA (Across from McDonald's)

PHONE 475-9106

"I am a lawyer, self employed. My KEOGH retirement plan at Great Lakes Federal will provide \$225,899 when I retire in 15 years."



Ms. Ethelyn Carver is a self-employed lawyer who has earned income that puts her into the 50% tax bracket.

Because Ms. Carver wanted to keep as much of her income as possible, while planning for her retirement years, she opened a KEOGH tax deferred retirement account. She found that she could contribute 15% of her income, up to a maximum of \$7,500 each year and deduct this amount from her taxable income.

She will have accumulated \$225,899 in her KEOGH account when she retires in 15 years. Because she qualifies for the maximum contribution, she will have reduced her taxable income each year by \$7,500. In an account or investment that was being reduced by taxes, she would only have \$78,804.

If you are self-employed you too can deposit up to 15% of your income, maximum \$7,500, in a tax deferred KEOGH retirement account. This amount can be deducted from your current taxable income and you do not pay taxes on it until you start making withdrawals after age 59½ at which time you will probably be in a lower tax bracket.

Your KEOGH account can earn the high interest rate of 8% per annum. Interest is compounded monthly and paid quarterly for an effective annual rate of 8.30%. At this rate your money doubles in approximately 8 years and 8 months. Minimum term 36 months.

With your account you receive a Retirement Account card which you can use when making deposits to your account and which entitles you to Travelers Checks and Money Orders free of charge. At the end of March, June, September, and December you receive a detailed statement which describes each deposit to your account.

YOU STILL HAVE TIME TO CUT YOUR 1978 INCOME TAX If you now have a KEOGH account and have not deposited up to your maximum you have up to April 15, 1979 to make your full 1978 contribution.

Federal regulations require a substantial interest penalty for early withdrawals.

The name and profession of the person in this ad is fictitious and solely an example of the benefits of a retirement account at Great Lakes Federal Savings.

GREAT LAKES FEDERAL SAVINGS

Offices in Ann Arbor, Battle Creek, Albion, Bellevue, Brighton, Chelsea, Coldwater, Dexter, Hastings, Jackson, Manchester, Marshall, Richland, Saline, Ypsilanti • Member FSLIC

Tonight and Every Thursday

THE CAPTAINS TABLE ROAST BEEF BUFFET



"Carved Before Your Eyes" Serving from 4:30-9:30 p.m.

The Captains Table - 8093 Main St., Dexter

News Reporter Wanted

Full-time, at once.
Experienced or journalism background.
Call W. Leonard for interview appointment, 475-1371 days, or 662-0524 evenings.

Please Notify Us of
Any Change in Address

MARGIE'S UPHOLSTERY

FREE ESTIMATES
• Large Selection of Materials
• Upholstery Supplies
• Repair Service
Pick-Up and Delivery Available
MARJORIE SMITH
Phone (313) 428-7146
207 W. Duncan,
Manchester

RICARDO'S HAIR STYLING

107 N. Main, Chelsea

OPEN TUESDAY THROUGH SATURDAY
475-1671



KITCHEN REMODELING

- ★ We at Dutch Country are kitchen remodeling specialists.
- ★ Expert installation available.
- ★ Free design layout service.
- ★ Featuring: HAND CRAFTED AMISH CABINETS.
- ★ Distinctive "GOLDEN OAK CABINETS" By Continental.
- ★ Jenn-Air Appliances ★ Delta Faucets ★ Elkay & Kohler Sinks.

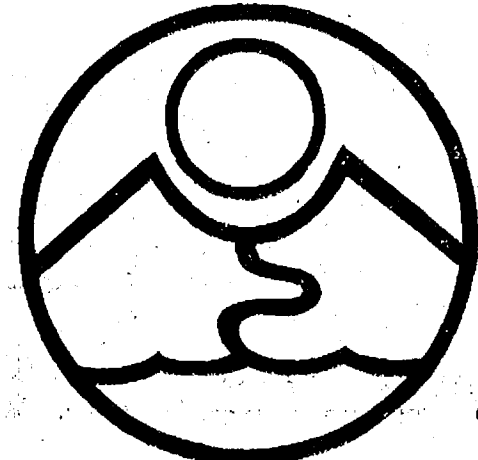
VISIT OUR SHOWROOM

DUTCH COUNTRY KITCHENS

146 E. Main 428-7292 Manchester

WANT NEW PEP and ENERGY?

Mix your own PERSONAL high-energy drink.
We have the protein, powder, yeast, lecithin and oil.



**RIVENELL
NATURAL
FOODS**
3212 ALPINE
DEXTER, MICH 48130
426-2549

Monday through Saturday, 9 a.m. to 5:30 p.m.
(Across from the Farmers' Market)

JC Auxiliary Names Slate for March 20 Election

The Feb. 20 membership meeting of the Chelsea Jaycee Auxiliary was held at the residence of Sandy Meyer, 19505 Old US-12. Special guests for the evening were active past-presidents Anne Steinaway, Sandy Brown, Alberta Colby and Sue Zink. A dinner was held in their honor before business commenced.

Election for the new auxiliary year was announced for March 20 and a slate of officers was presented as follows: Carol Smith for president, Denise Martell for vice-president and Nan Rowe for secretary.

As part of standing reports, BUBS chairman Smith stated that the infant seat rental program had been launched. Bowling at the Chelsea Lanes on March 4 is to take place as part of Get That Chicken Fat exercise program.

Going over old business, a final report was given on Teachers' Appreciation. \$10 per school had been given in the name of the faculty for use in their media center.

New business covered aid to Special Olympics with their upcoming bowling tournament. It was decided to hold a fund-raising project with proceeds going to Multiple Sclerosis. Assistance was asked by the Jaycees for their M.S. project, Read-A-Thon. Ginny Wheaton agreed to chair the annual cribbage tournament sponsored by the Auxiliary.

Two-minute speak-ups were heard by members as part of the group's personal dynamics program. Upon conclusion of the meeting awards were presented. Shirley Weatherwax was named "Girl of the Month" and "90 Day Wonder."

Child Study Club Revising By-Laws

Chelsea Child Study Club met at the home of Lynda Cattell Tuesday, Feb. 27.

Barbara Branch presented a program "Before and After," demonstrating skin care with Mary Kay products. Diane Borton and Nancy Grau were her assistants.

Roberta Cobb is a new member. The nominating committee presented the slate of officers to be voted on at the next meeting. Revisions in the club's by-laws were discussed and voted on. Since the entire booklet of by-laws is to be revised and printed, further discussion will continue at the next meeting.

The next meeting, March 13, will be at Wyn Schumann's house, with a program titled "Ukrainian Eggs," presented by Carolyn Sauter. Guests are welcome.



HONORABLE BAKE SALE: Chelsea High are, from left, Julie Botsford, Sheila Tarasow, and school National Honor Society members held its annual bake sale last Saturday as a means of raising money for a scholarship fund. Selling holds its "Tag Sale." sweets baked by most of the society's 75 members

Town & Country Woman's Club Studies Crocheting

Town & Country Woman's Club met at the home of Joanne Walter, Tuesday, Feb. 27. Co-hostess was Roberta Johnson.

Mrs. Waller presented the program on crocheting. Basic crocheting instruction was given to beginners by Wanda Conner. Some fast learners completed their projects by the end of the evening. Guests were Catherine Wojcikowski, Vivian Michelson, and Winnie Osborne.

Homemaker Club

Homemaker Club held its regular meeting Thursday, Feb. 22 at the home of Vickie Kern. The meeting was called to order at 8 p.m. by President Arlene Grau.

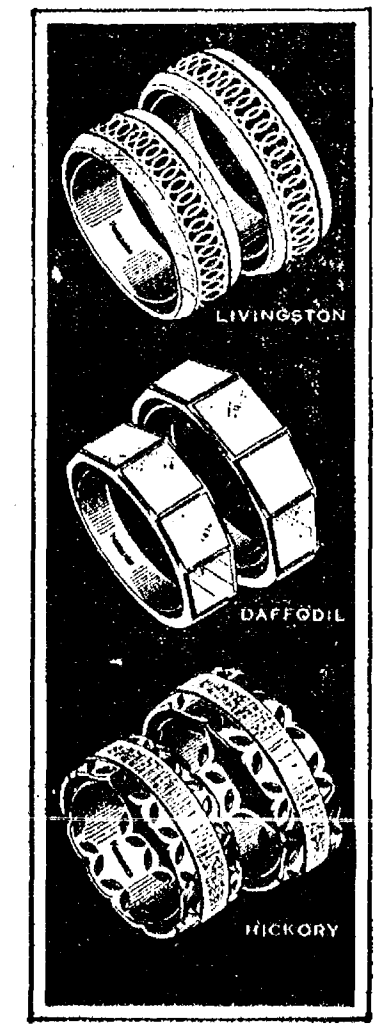
Dawn Jenkins of the Antique Gallery in Ann Arbor led an informative discussion on antiques. Several members shared pieces of their collections. Mrs. Jenkins commented on individual antiques and collectibles in general. On March 14 the club will be holding a ceramic workshop for interested members. Members and guests will gather again at the end of March for a dance.

The resignation of Frances Murphy was regrettably accepted. Secret Pal gifts were exchanged by many members. The hostess and Marge Plumb served refreshments following the meeting.

Art Show...

(Continued from page one)
on Sunday, March 4 from 2 to 4 p.m. at Sill Hall on the Ypsilanti campus. Refreshments will be served. The gallery is open from 8 a.m. to 5 p.m., Monday through Friday.

14 KT GOLD WEDDING RINGS



Keepsake
For pride and pleasure,
choose Keepsake matched rings.
Magnificent styles,
superb quality.

**WINANS
JEWELRY**

*Trade-Mark Reg.

Brenda L. Shadoan Chosen By National Honor Sorority

Brenda Lee Shadoan, a junior at Capital University, Columbus, O., has been invited to become a member of Psi Chi, the National Honor Society Sorority for psychology students.

The initiation dinner will be held on Thursday, March 1 in the campus center at the university. Brenda is the daughter of Dr. and Mrs. James D. Shadoan, 314 Washington St.

Telephone Your Club News
To 475-1371.

CAROL'S CUTS

328 Wilkinson

Monday, Wednesday
and Friday

475-7094

Appts. Only

9:30 a.m. - 3:00 p.m.

Ruth Circle Notes

Ruth Circle Methodist Women met Wednesday, Feb. 21 at 1 p.m. in the Crippen building of the Village Apartments.

Following the regular monthly business meeting, devotions were given by Mrs. Muriel Christian. Mrs. Florence Simmons, president, presented a talk on China. Hostesses Mrs. Ralph Harper and Mrs. Rennie Buxton served refreshments.

HOST Carpet Cleaning

If March weather and muddy feet have soiled your carpeting, it's wise to give it some attention now. We recommend Host, the new method of cleaning carpets without water. The carpet is dry and ready to walk on immediately. Use our Host Electric Up-Brush. It's easy. Clean 40 sq. yds. only \$9.95. Phone for information.

**MERKEL
BROTHERS**

Lumen Christi Zone Beats Bulldogs...

(Continued from page one)

ed with the jobs turned in by Dunn, Killelea and Feeney," Raymond commented. Chelsea travels to Lincoln on Friday, March 2 for the final SEC match. Tournament play begins Monday, March 5 at Willow 7:30 p.m.

Run with the Bulldogs taking on the Dexter Dreadnaughts. Dexter has fallen twice to Chelsea this season. Winner of this game will play South Lyon with that winner to advance to championship competition on Saturday, March 10, at 7:30 p.m.

DEXTER DANCE ENROLL NOW!

New Session
Starts March 5th

Classes in Dance Movement
and Ballet for children,
teens and adults.

MICHELE THOMPSON
1-498-2118

SHERRY EYSTER
995-7259



SPRING FASHIONS Arriving Daily

- ★ QUEEN CASUAL
- ★ JANE COLBY
- ★ TRISSY
- ★ LEVI'S

Men's Styles By

LEVI - CAREER CLUB
CAMPUS - OSHKOSH

Shoes By

DEXTER - CONNIE - ADIDAS
CONVERSE

DANCER'S

Chelsea's Friendly Dept. Store

CHELSEA AREA HISTORICAL SOCIETY

Box 334
Chelsea, Michigan 48118

OFFICERS

President Mrs. John Moore
Vice-President Mrs. George Holmes
Secretary Mrs. Frederick Petsch
Treasurer Max Hepburn

DIRECTORS

Harold Jones
Mrs. James Nicola
Mrs. Charles F. Ferrera

Dear Friends:

Mrs. John Moore and her board members have many interesting meetings planned for the year.

The Historical Society is also planning to have an informative booth at the Chelsea Fair this year, which should create interest in the organization.

The month of February opens our fifth year for the annual membership drive which is for past members, present members and any newcomers in the area that would be interested in becoming members.

Let's make it a rewarding year — one of many accomplishments. It can be done if we have the support of interested members.

Don't lay the form aside; fill it out and mail it in promptly.

Looking forward to seeing everyone at the meetings this year.

Sincerely,

Mrs. Wm. C. Dittmar

Chairman Membership Committee

Detach Here and Mail

MEMBERSHIP APPLICATION FORM

Mr. Miss
Mr. & Mrs. _____ (Please Print)

Address: _____ Phone: _____

City: _____ State: _____ Zip: _____

Please check the membership class you have selected, fill in above, insert your remittance and detached membership form in an envelope, seal and mail to: Chelsea Area Historical Society, Box 334, Chelsea, Michigan 48118.

CLASSES OF MEMBERSHIP

- ☐ Individual Active Member \$5.00 a year
- ☐ Family Active Membership \$8.00 a year
- ☐ Junior Active Membership \$1.00 a year
- ☐ Senior Citizen Membership \$1.00 a year
- ☐ Associate Member \$10.00
- ☐ Patron Member \$25.00 or more (individual, group or firm lending sustaining support.)
- ☐ Life Member \$100.00 (one payment.) (individuals only, and in
- ☐ Renewal

MEMBERSHIPS ARE DEDUCTIBLE FOR INCOME TAX PURPOSES.

GLAZZIE SALE

ALL GLAZED DONUTS and ROLLS

2 for 25¢

Thru March 10
Reg. 20c ea.

We Now Carry A

FULL LINE OF CAKES

For Birthdays, Graduation... All Special Occasions

MANAGER'S GIVE-AWAY

ONE CUP OF
**COFFEE
FREE**

With This Coupon
March 5-8, 1979 Only
(No take-outs)

At The Village Bakery
103 W. Middle St., Chelsea, Mich.

STORE HOURS:

Monday ... 6:30 a.m. to 5:30 p.m.
Tuesday ... 6:30 a.m. to 5:30 p.m.
Wednesday 6:30 a.m. to 5:30 p.m.
Thursday ... 6:30 a.m. to 5:30 p.m.

NOW ALSO OPEN

Friday ... 6:30 a.m. to 8:30 p.m.
Saturday 6:30 a.m. to 4:30 p.m.

THE VILLAGE BAKERY

New Owners: Art & Anne Steinaway
103 W. MIDDLE ST.
NORENE COLLINS, MANAGER

Ann Arbor Trust Co. Announces Stock Split

Ann Arbor Trust Co. shareholders have approved a 2-for-1 stock split. It was announced today by President George H. Cress. Record date for the split is March 20, and is effective as of April 12, 1979. Action on the stock split was taken at the

annual meeting of Ann Arbor Trust shareholders held Tuesday at the Campus Inn.

Cress confirmed in his report to shareholders that 1978 earnings reached a record high level of \$9.46 per share, compared to \$7.14 in 1977. This reflected an increase of 18.5 percent.

The Board of Directors approved a quarterly cash dividend of 75 cents per share, payable March 15 to shareholders of record on March 1, 1979.

"We will continue to provide the highest level of banking, trust, and related financial services to Washtenaw county and closely adjoining communities," Cress reported to his company's shareholders.

"We will seek and take advantage of attractive new market areas, as well as consider further branching to accommodate our existing customers as the economy permits," he added.

Cress's remarks were in part reference to Ann Arbor Trust branch activities begun last fall with a trailer branch office in Chelsea while new branch bank buildings are under construction in both Chelsea and Brighton. These facilities are expected to be completed on or about May 1.

Under a federal law administered by the U. S. Department of Labor, men and women who leave their jobs to enter military service or training—including National Guard and the reserves—are protected from losing their jobs or other employment benefits because of their service.

**"If you don't know
tax laws...you need
H&R Block"**



Henry W. Block

We are income tax specialists. Our preparers are carefully trained. We'll prepare the form that is best for you because we want to make sure you pay the smallest legitimate tax. Another reason why you should let H&R Block do your taxes... which ever form you use, short or long.

H&R BLOCK
THE INCOME TAX PEOPLE

CHELSEA

105 S. MAIN ST.

PH. 475-2752

9 to 6 Mon. thru Sat.

Evenings and Sundays
by appointment.



7th Grade Cagers Place 2nd In Stockbridge Tournament

(Continued from page one)
penetrating the Fowlerville zone defense. Chelsea could only score six points in the first half that saw Fowlerville go into the locker room at half-time with a 10-6 lead. The Chelsea 7th graders came out in the second half and played an outstanding defensive game, limiting the Fowlerville team to just one field goal in the second half when the game was well out of reach. Glenn Prinzing took control of the game on the boards and scored 10 points to lead the team's scoring while Marty Steinhauer scored 9 points while playing one of his best games of the year. Eric Green and Greg Stephens played well while filling in as the play-making guard. David Lane came off the bench in the second half to get the offense into gear as Chelsea pulled away to a 24-15 win.

Saturday the Chelsea 7th graders faced Stockbridge in the final game of the tournament for the tournament championship. The game began with what appeared to be an easy victory for the Stockbridge team as Stockbridge opened strong and looked as if they would blow Chelsea off the floor. Stockbridge opened a 13-1 lead over the Chelsea 7th graders as Chelsea could manage only one free throw in the first quarter. The rout continued until the middle of the second quarter as Stockbridge continued to stretch the lead. Chelsea finally began to score as Glenn Prinzing began to hit the offensive backboard, and put in seven points to bring Chelsea to within 14 points at half-time, with the score 25-11.

Chelsea came out in the second half and played good pressure defense and made a strong run at Stockbridge to narrow the score to 29-25. Marty Steinhauer, Glenn Prinzing, and David Lane led the comeback with Chelsea's zone press. However, Stockbridge regrouped and held off the Bullpups to win the championship, 37-31. Both teams played excellent man-to-man defense and showed good team depth using 10 players each. Randy Sabo played his best game of the year for Chelsea while David Kiel and Charles Hager played well on defense. Jay Marshall, Jeff Martin, Eric Green, Jeff Blain,

chard and David Bushway all played well in short appearances. The Chelsea 7th graders finished the season with an over-all record of 8 and 4. Coach Charles Waller commented that "this group of 7th graders has a bright future if they continue to improve. Their greatest weakness appears to be their slow start in the first quarter, but they constantly showed

they had plenty of heart during the season as they played excellent defense in the second half of most games and often were forced to come from behind."

Men and women who leave their jobs for military service have reemployment rights under federal law, according to the U. S. Department of Labor.



**Hoffman
Tire & Service**

7 miles west of Chelsea

13660 E. Michigan

Grass Lake 522-8542

THE SIGN OF QUALITY TIRES
CERTIFIED IN TUNE UPS & ENGINE
REPAIR

FEED

FOR
PROFIT

**Feed Formulas Tested,
Proved To Get Results**

Extra proteins, vitamins and minerals in proper balance, scientifically blended, make our feeds real profit producers for you.

Farmers' Supply Co.
Phone GR 5-5511

READY FOR THE BIG TEST: Those long hours of dedicated practice will culminate in the annual spring evaluation to be held Sunday, March 4 at the University of Michigan School of Music. Among the 138 area students entered in the event are 31 Chelsea students, some pictured here. From left, in front, are Bobby Pratt, Kim Collins, Christine Young, and Amy Dmoch. Second row musicians are, from left, Michelle Young, Julie Pratt, Cindy Stirling, David Mayer, and Cheryl Martin. Bringing up the rear are Carol Stirling Amy Finkbeiner, Mary Anderson, Kimberly Boyd, David Barels, and

Margaret Merkel. Student achievement testing day is sponsored by the Michigan Music Teachers Association, the Michigan affiliate of Music Teachers National Association. Those from Chelsea are students of LaVonne Harris, Betty Rasmussen, and Pat Stirling. Also participating are Duane Branch, Beth Depping, Chris Gallas, Chris Johnson, Daniel Klemmer, Becca Lee, Melanie Lee, Tucker Lee, Carol Palmer, Jim Rooke, Valerie Stoker, Colleen Stubbs, Marie Sullivan, Cinda Thornton, Carol Warren, and Marleen Williams.

LYNDON TOWNSHIP Ordinance No. 6

FISCAL YEAR ORDINANCE

An Ordinance to establish the fiscal year of the Township of Lyndon, Washtenaw County, Michigan and the annual settlement day for such Township pursuant to Michigan Public Act 596 of 1978.

**THE TOWNSHIP OF LYNDON
WASHTENAW COUNTY, MICHIGAN
HEREBY ORDAINS:**

SECTION I
Commencing in 1979, the fiscal year of the Township shall extend from April 1st of each year until March 31st of the following year.

SECTION II
The annual settlement day meeting of the Township Board shall hereafter be held on the 15th day of the last month of the fiscal year of the Township unless said day falls on a Saturday, Sunday or legal holiday whereupon said meeting shall be held on the following

Monday which is not a legal holiday.

SECTION III
The annual meeting of the electors of the Township, shall be held on the last Saturday in the last month of the aforesaid fiscal year at such time and place as is determined by the Township Board.

SECTION IV
This Ordinance shall take immediate effect. All ordinances or parts of ordinances in conflict herewith are hereby repealed.

I LINDA L. WADE, do hereby certify that the above Ordinance was duly adopted by the Lyndon Township Board on the 20th day of February, 1979, at a regular meeting upon the motion of Barbara Roderick, seconded by Oran A. Beeman, Sr., with the following roll call vote: Ayes 5; Nays 0.

Dated: February 26, 1979.
Linda L. Wade,
Lyndon Township Clerk.

Three Chelsea Students Receive Scholarship At Western Michigan

Three Chelsea seniors at Western Michigan University have received scholarships for the current winter semester from the Paper Technology Foundation, Inc.

They are Steven D. Bennett, 8215 Beeman Rd., Brian D. Smith, 7676 Werkner Rd., and Keith Cokerline, 66 Cedar Lake.

The scholarships range from \$99 to \$1,111 per student and are renewable for a student's entire undergraduate career at Western if adequate grades are maintained.

The awards are financed by funds from the foundation's more than 80 corporate and 200 alumni and individual members.

GALA OPEN HOUSE

Thurs., Fri., Sat., March 1-2-3

at

LLOYD BRIDGES CHEVROLET

M-52 and I-94, CHELSEA

MICHIGAN'S LARGEST VAN DEALER INDOOR DISPLAY

Featuring

**TRANSVAN - GALAVAN - CHEVY SPORT VAN
MINICRUISER on a Toyota Chassis
HOPCAP - TRAVCO FAMILY WAGON**

REFRESHMENTS and GIFTS

Our Lot Runneth Over With Inventory.

Save hundreds on these units at winter prices.

OPEN Mon.-Thurs., 8 to 8:30; Friday, 8 to 6; Saturday, 8 to 5

LLOYD BRIDGES CHEVROLET

FOR QUALITY, SERVICE & PRICE,
Travel With Lloyd

I-94 and M-52, CHELSEA

PH. 475-1373

"T-BILL" CERTIFICATES: Inflation Fighter Deluxe

Effective Thursday, March 1 Through Wednesday, March 7

9.49% → 10.10%

Current Rate—6 Month Maturity

Compounded Continuously—Effective Annual Yield

An Exciting New Investment Opportunity with these Significant Advantages:

1. High rate of return on 6 month "T-Bill" Certificate of Deposit. Rate pegged to average return on 6 month Treasury Bills. Now compounded continuously for a much higher effective annual yield.
2. Unlike Treasury Bills, you pay no fee to open the 6 month "T-Bill" Certificate at Ann Arbor Trust.
3. Short maturity on your investment. At the end of 6 months, you pocket the high interest received and reinvest your money.
4. Convenient, secure, and, of course, insured up to \$40,000. Minimum "T-Bill" Certificate is \$10,000.
5. For information on current rates, call 994-5555 in Ann Arbor, 475-9154 in Chelsea, and 227-5551 in Brighton.
6. Come in soon. Enjoy free parking and first class banking at the Bank of Trust. In Ann Arbor, Chelsea, and soon to be in Brighton.

*This is an annual rate and is subject to change upon renewal.
Federal regulation requires a substantial interest penalty on payment of a Time Certificate of Deposit before maturity.

ANN ARBOR

100 South Main, Ann Arbor • Phone 994-5555



THE BANK OF TRUST
MEMBER F.D.I.C.

TRUST COMPANY

1478 Chelsea-Manchester Road, Chelsea • Phone 475-9154

— OFFICIAL NOTICE —
**REGULAR MEETING OF THE
 DEXTER TOWNSHIP BOARD**
 will be held

Tuesday, March 6, 1979 - 7:30 p.m.

at the Dexter Township Hall, 6880 Dexter-Pinckney Rd.

ITEMS TO BE DISCUSSED:

- 1) Expenditure of Revenue Sharing Funds.
- 2) 1979-1980 Budget.

WILLIAM EISENBERGER
 Dexter Township Clerk

**ATTENTION
 LYNDON TOWNSHIP
 RESIDENTS**

A Public Hearing on the recently revised Land Use Development Map will be held on March 8, 1979 at 8:00 p.m. at the Lyndon Townhall.

LYNDON TOWNSHIP

Barbara Roderick, Planning Commis. Secretary

NOMINATION FORM

**for CHELSEA JAYCEE
 DISTINGUISHED SERVICE AWARD**

The Jaycee Distinguished Service Award is now open to any age, man or woman, who has given service to this community. We would greatly appreciate all nominations for this award. The nomination may be made by an individual or a group.

Please send nomination form to Chelsea Jaycees, P. O. Box 277, DSA Awards Chairman, Chelsea, Mich. 48118.

I Nominate _____ (name)

of _____ (address) for the Chelsea

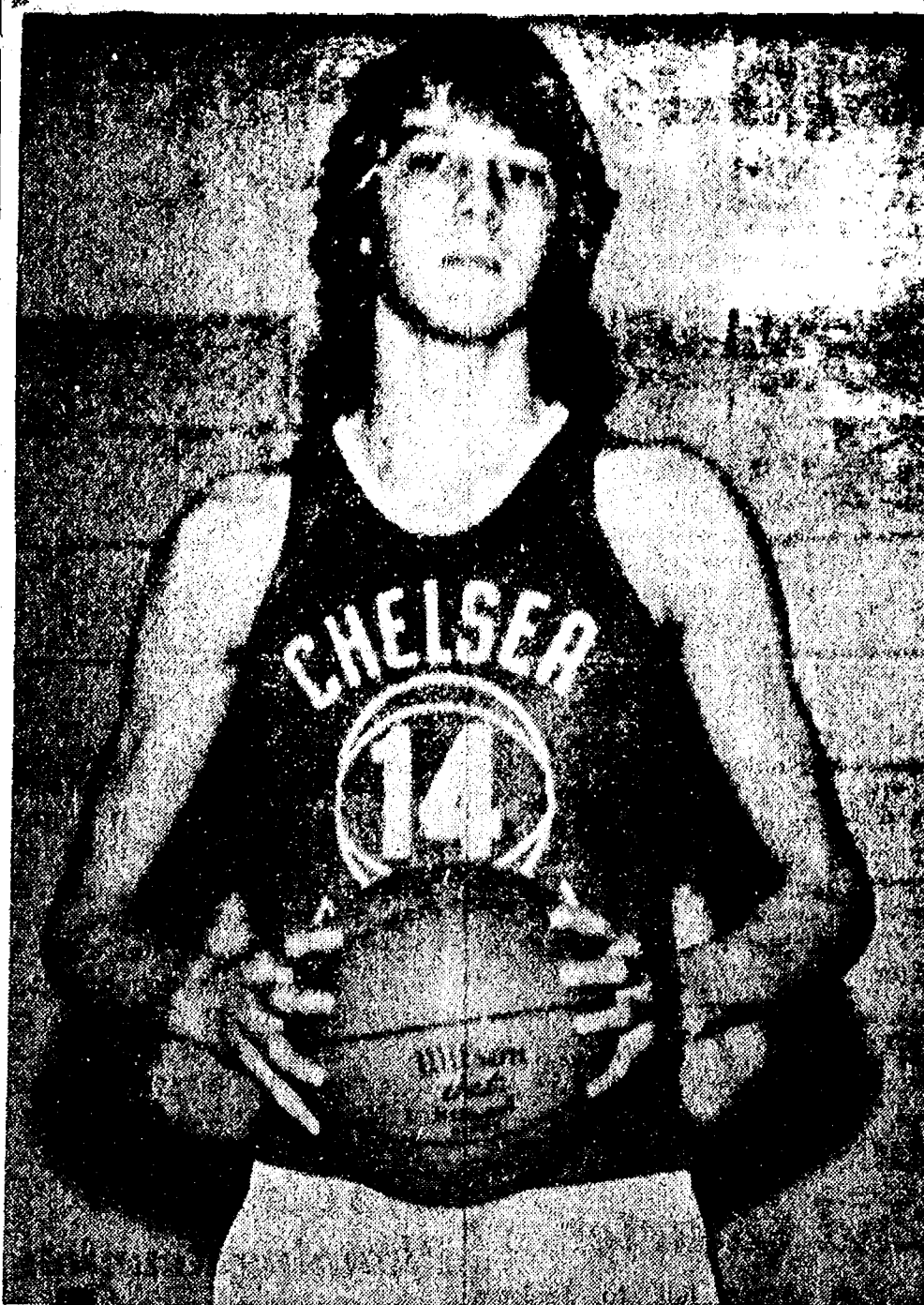
Jaycee's Distinguished Service Award.

Signed _____

Phone No. _____

A Standard Want Ad Gets Results!

Cager of the Week



DON SCHROTTENBOER (34), by far the tallest member of the Chelsea Varsity Bulldog basketball team, the 6'7" junior has "considerably improved his inside offensive game this year and with continued work should be a promising dominating center next year," according to Coach Robin Raymond. Schrottenboer describes his job as center as "getting the rebounds. I do little scoring myself but work to get the fast break going by grabbing the defensive rebound and passing the ball out to a guard," he explained. Despite his comment on doing little scoring, Schrottenboer has compiled an average of 8.4 points a game (third on the team), and 9.3 rebounds (second on the team). He leads the Bulldogs with 44 blocked shots. Schrottenboer likes aggressive games and so the second match with Novi is what he believes was Chelsea's finest performance of the year. "The attitude on the team was the most positive I've seen and we out-played the opponents in all areas," he commented. Bulldogs took that game, 54-50. Schrottenboer's best game was against the Milan Big Reds the second time around as he netted 16 points and completed 12 rebounds. "We have had a fairly good year although we did have an attitude problem in the middle of the season. I think we've cleared that up now, and should have a good shot during tournament play, especially since we have defeated the two teams we'll meet, Dexter and Milan," Schrottenboer remarked. In addition to playing basketball, Schrottenboer is a member of the varsity track team which began practice on Tuesday. Basketball players who are on the track team will begin practice following the tournament which begins the week of March 5. He is the son of Mr. and Mrs. Roger Schrottenboer, 17255 Carolina Trace.

**Please Notify Us
 In Advance of
 Change in Address.**

**Area Students on
 Academic Honors
 List at Ferris**

Ferris State College honored 1,937 students, including seven from the area, for scholastic excellence during the fall quarter by naming them to the academic honors list.

To be named to the list, a student must earn at least a 3.25 average on a 4.0 basis and carry a full academic load of 14 quarter hours.

Students named to the list are Kim M. Clark of Grass Lake; Kurt J. Allshouse and Lisa J. Allshouse, formerly of Chelsea; Julia A. Chapman, Perry R. Johnson, Stephen A. Snyder, and Lisa Walworth, all of Chelsea.

The most tragic segment of the hearing impaired population probably are those who do not seek help for their handicap because of vanity, say hearing specialists. These people frequently are needlessly living in a silent, isolated world, the officials add.

Culligan
 filtered
 conditioned
 SOFT WATER

**LIKE HAVING
 A FAMILY
 SERVANT!**

You'll find that you can clean kitchens and baths in a fraction of the time. Eliminates dulling hard water film... helps keep everything cleaner longer. Saves on soaps and cleaners.

ASK THE MAN WHO CARES!
 SAY —



2321 JACKSON AVE.
 ANN ARBOR
 662-5665

Evenings and Week-ends call
 Forrest Bryant, 426-2536

**Senior Citizen Nutrition Program
 MENU and ACTIVITIES**

Week of March 1-8

Thursday—11:45 a.m. lunch of lasagna, buttered carrots, tossed salad, Italian bread and butter, cupcakes, beverage. Cards and games, plant class, nutrition education. Bridge after lunch.

Friday—Noon lunch of macaroni and cheese, brussels sprouts, tomato juice, bran muffins and butter, pudding, beverage. Cards and games, recorder class, Bible study.

Monday—Noon lunch of cornflake crumb chicken, sweet potatoes, applesauce, gelatin, bread and butter, fresh fruit, beverage. Cards and games, folk dancing.

Tuesday—Noon lunch of western meat loaf, scalloped potatoes, buttered peas, bread and butter,

apricots, beverage. Cards and games, crafts.

Wednesday—Noon lunch of Hawaiian chicken and rice, orange-glazed beets, coleslaw, cornbread and butter, peaches, beverage. Cards and games, exercises.

Thursday—11:45 a.m. lunch of beef stew, potatoes and vegetable, pear salad, bread and butter, peanut butter raisen cookies, beverage. Cards and games, plant class, bridge after lunch.

Through daily computer printouts in the Job Banks, jobseekers at state employment service offices in major cities and other locations receive current information about job vacancies in their area.

**LIMA TOWNSHIP
 NOTICE**

The office of the Lima Township Zoning Inspector, Mansour Rejali, 1645 South Fletcher Road, phone 475-1853, will be open Monday through Friday from 5:00 p.m. to 8:00 p.m. All permits will be issued within 10 days.

LIMA TOWNSHIP
 Arlene R. Bareis, Clerk

Standard Want Ads Will Sell Your Unwanted Items

Jiffy market
Big Enough To Serve You . . . Small Enough To Know You!

PHONE 475-1701

SALE PRICES GOOD MARCH 1-4, 1979

TOP VALUE FOODS - GUARANTEED SATISFACTION - COURTEOUS SERVICE

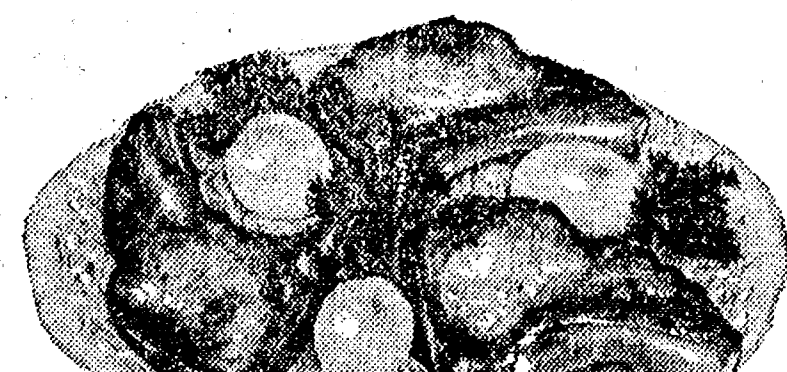
COMPLETE FRESH MEAT DEPT. - USDA CHOICE BEEF - THE FINEST OF FRESH PORK



USDA CHOICE

**ROUND
 STEAK**
\$1.89 lb.

**JIFFY
 MARKET
 TASTIEST
 TENDEREST
 CHOICE
 MEATS**



YOUNG PORK, LEAN - TENDER

QUARTER PORK LOINS
 1/4 Pork Loin
 Sliced into
 9 to 11 chops **\$1.49 lb.**

WILSON'S SMOKED

SLICED SLAB BACON . . . Random Weights lb. \$1.09

YOUNG - LEAN - TENDER
**PORK
 STEAK**
\$1.39 lb.

SALAY'S
**Old-Fashion
 FRANKS**
\$1.79 lb.

FRESH - SLICED
**PORK
 LIVER**
29¢ lb.

U. S. D. A.
**RIB
 STEAKS**
 Large End **\$1.98 lb.**

BAKE-A-TERIA - QUALITY BAKERY PRODUCTS

BISMARKS . . . Kastrd Lemon or Jelly Filled This Week 1/2 Doz. 98¢

BISQUICK
**Buttermilk
 Baking Mix**
 2 1/2-Lb. Box **\$1.09**

WESLEY'S
 QUAKER-MAID
 FLAVOR OF MONTH
**Peanut Buttercup
 ICE CREAM**
 1/2 gal. **\$1.49**

PILLSBURY
**Sweet Milk or
 Buttermilk
 BISCUITS**
 7.5-Oz. Tube **17¢**

HEINZ
**Home Style
 GRAVY**
 Brown, Chicken, Onion or Mushroom
 12-Oz. Jar **49¢**

FARM - MAID

LO-FAT MILK . . . gal. \$1.39

FARM - MAID
**HOMO
 MILK**
\$1.69 gal.

FARM - MAID
**COTTAGE
 CHEESE**
 1-Lb. Crtn. **79¢**

FARM - MAID
**CHOCOLATE
 MILK**
49¢ qt.

SUNBEAM ENRICHED

WHITE BREAD . . . Large 1-Lb., 4-Oz. Loaf 29¢

JIFFY MEAT SERVICE
 CUSTOM CUTTING, WRAPPING, FREEZING.
 QUICK SERVICE ON BUTCHERING —
 YOUR BEEF OR OURS.

- ★ U.S.D.A. CHOICE SIDES OF BEEF
- ★ FRONTS - HINDS - WHOLE RIB - WHOLE LOINS
- ★ LOCAL FARM CORN-FED BEEF AVAILABLE.

JIFFY MARATHON GAS PUMPS
 REGULAR **71.9** gal. Includes All Taxes

THANK YOU — We Appreciate Your Business!

Open With Complete Service, 7 Days A Week
 TOP VALUE **7 a.m. MORNING to 10 p.m. NIGHTS** FOODS

Sale Prices
 March 1
 Thru
 March 4

If it doesn't say:
F.D.I.C.
 in the ad, you don't
 have F.D.I.C. protection!

F.D.I.C. denotes
 Federal Deposit Insurance Corporation.
 When you see the words,
 "Member F.D.I.C." in an ad, it
 means the bank automatically
 insures each depositor to \$40,000!

Funds you have in BOTH savings and checking are
 automatically insured safe for the total amount of your
 checking and savings, up to \$40,000!

You not only have the good name of this bank to depend
 upon... you also have F.D.I.C. insurance.

We, as a Community Banker, thought you should know the
 double safeguard your funds enjoy when you intrust those
 funds to us.

**We're
 The Ones**
 ...Who Make It Happen

**CSB CHELSEA
 STATE
 BANK**
 Member F.D.I.C.

Community Calendar

Week of March 1-8
1979

Parents interested in coaching soccer meet Tuesday, March 6, 7:30 p.m. at North school media room.

Chelsea Community Farm Bureau, Thursday, March 8 at the home of Mr. and Mrs. Norman Hinderer, 7:15 p.m., pot-luck supper.

Chelsea Community Hospital Auxiliary, Monday, March 19, 8 p.m., in Surgical Center Waiting Room. Speaker, Dr. Davies, speaking on the clinic.

St. Mary Altar Society, Monday, March 5, 7:30 p.m. in school hall. Slides on Hungary will be shown.

North school parent-teacher group, Thursday, March 8, 8 p.m. in North school Media Center.

Rogers Corner's Farm Bureau at home of Mr. and Mrs. Oscar Haeussler, Linden Ct., Saline, March 9, 8:30 p.m.

Chelsea Jaycee Auxiliary's annual cribbage tournament begins March 12. Further details next week.

Stockbridge American Legion Saturday, March 3. Music by the Blue Rhythm Band. 9 p.m. to 1 a.m.

"Save the Seals" rally, Friday, March 16, Kennedy Square in Detroit. Starts at noon. Transportation is available from Ann Arbor. For more information call 663-3133 or 662-0271.

St. Patrick's Day party, Ann Arbor Eagles, 7562 Jackson Rd. Food and music from the 50's, 60's and 70's. \$5 per person, 9 to 1. Everyone welcome. Tickets in advance or at door.

Lima township board regular meeting first Monday of each month, 8 p.m., Lima Township Hall.

Regularly scheduled Lima Township Planning Commission meetings will be held on the first Tuesday of each month beginning January, 1979 at 8 p.m., Lima Town Hall.

Herbert J. McKune Post No. 31 American Legion regular meeting, Thursday, March 1, 8 p.m. at the post. Executive Board at 7:30 p.m. that night to discuss working with the Jaycees in hosting bingo games in the post. Pat Merkel will announce the profits from the Winter Carnival.

North Lake United Methodist Church, Lenten pot-luck Wednesday, March 7, 6:30 p.m. The new color motion picture "Corrie, The Lives She's Touched," will be shown. Bring a dish to pass. Everyone welcome.

From the day forward, the regular meeting of the Board of Road Commissioners of Washtenaw county will be at 1 p.m. on alternate Tuesdays. The next regular meeting will be held March 13 at 1 p.m.

Regular meetings of the Lyndon Township Planning Commission are held at 8 p.m. the second Thursday of each month at Lyndon Town Hall.

Senior Citizens meet the third Friday of every month. Pot-luck, games, and cards at St. Mary's school, 6 p.m.

Modern Mothers Child Study Club, Tuesday, Feb. 27, 8 p.m., at the home of Pat Whitesall.

Waterloo Interpretive Center is open Tuesday through Sunday, 9 a.m. to 5:30 p.m. Ph. 475-8063 for more information.

Sharon Township Board regular meeting first Thursday of each month, 8:30 p.m.

Chelsea Communications Club, fourth Wednesday of each month at 7:30 p.m., in the Chelsea Lanes basement meeting room.

Chelsea Home Meal Service delivers one hot meal a day to elderly and disabled living in the Chelsea area. For more information, call Caralee Hoffmeyer, 475-8014, or Barbara Branch, 475-7644.

Lyndon Township Board regular meetings the third Tuesday of each month, 7 p.m., in Lyndon Town Hall.

DEATHS

John (Jack) Collins

Dies Saturday at Chelsea Community Hospital

John (Jack) Collins, 48, 315 W. Middle St., died Saturday, Feb. 24 at Chelsea Community Hospital.

He was born Jan. 18, 1931 in Stockbridge the son of T. Herbert and Ardie (Hubbard) Collins. Mr. Collins had been a resident of Stockbridge and Chelsea during his life.

He married Noreen Packard on Sept. 14, 1968 in Chelsea. He was a member of the Chelsea United Methodist church, the UAW Local No. 1284 and was an active bowler and member of the ABC.

Mr. Collins served in the U. S. Air Force and had been employed by the Chrysler Proving Grounds as a driver mechanic for 23 years.

He is survived by his widow, three daughters, Colleen Thompson of Chelsea, Beth Collins of Kalamazoo, and Deann Collins at home; five sons, John Thomas and Christopher of Portage Lake, Ronnie of Ypsilanti, Mark of Ann Arbor, and Tommie of Holt; his mother, Mrs. Ardie Collins of Stockbridge; three grandchildren, Daymon, Delyn, and Trevar; two sisters, Marian Collier, and Phyllis Collins; and two brothers, David Collins and Loren Collins.

He was preceded in death by a son, John Allen, his father, and a granddaughter, Sara.

Funeral services were held Tuesday, Feb. 27 at the Chelsea United Methodist church with the Rev. Marvin H. McCallum officiating. Burial followed at Oak Grove Cemetery, Chelsea.

Memorial contributions may be made to the American Cancer Society.

Arrangements were handled by the Burghardt-Cole Chelsea Chapel.

Father-Daughter Banquet Scheduled By Girl Scouts

Girl Scout Intertroop chairman, Phyllis Munger, has announced the annual Father-Daughter Banquet will be held on Girl Scout Sunday, March 11 from 6 p.m. to 8:30 p.m.

A chicken dinner will be served at the Chelsea High school cafeteria at a price of \$3.25 per person. Square dancing will follow in the High school gym.

The banquet is open to all registered Chelsea Brownies and Girl Scouts. Please contact your Scout leader for more details.

Mrs. Hollis Freeman

Former Chelsea Resident Dies in California

Mrs. Ethel Freeman, died Thursday, Feb. 22 at the Laguna Beach Nursing Home in Laguna Beach, Calif.

She was born Aug. 22, 1898 in Chelsea the daughter of John and Cora (Luta) Kalmbach. Mrs. Freeman lived in Chelsea until her marriage in 1920 to Hollis W. Freeman. She then lived in Ann Arbor until her husband's death in 1961 when she moved to Leisure World, a retirement community in Laguna Hills, Calif.

Mrs. Freeman's father was a well known Chelsea attorney and her husband was the son of another well known Chelsea resident, L. T. Freeman.

Survivors include a son, H. William Freeman, Mission Viejo, Calif., and two grandsons. She is also survived by three brothers, Dr. Roland E. Kalmbach, Lansing; Lloyd R. Kalmbach of Boonville, N. J.; and Leland J. Kalmbach of Connecticut and Chelsea; and several nieces and nephews.

Services were held at the Sheslers Chapel in Laguna Beach, Calif.

St. Paul Organist Accepted for Study at Theological Seminary

Mary C. Olney, staff assistant and organist for St. Paul United Church of Christ recently received notice of acceptance from San Francisco Theological Seminary in San Anselmo, Calif.

She will leave for the seminary this fall for the three-year program which will lead to a Master of Divinity Degree. This will prepare her for ordination in the United Church of Christ.

Mary received her bachelor of music degree from Lewis and Clark University in Portland, Ore., and her master of music from the Conservatory of Music, University of Cincinnati. She lives in Chelsea and has been employed with the St. Paul church on the Christian Education program and the children's choir for the past three years.

Varsity Basketball Schedule

Mar. 2—Lincoln T
All games start at 6:30 p.m.

Frosh Cagers Drubbed By Brighton 93-51

Chelsea's Bullpups took a sound loss last Thursday, 93-51, in an encounter with the Brighton team. "Our offense improved in this game but our defense failed us completely and allowed Brighton to score almost at will," commented Coach Jim Tallman.

Leading scorer for Chelsea was Todd Sprague with 13. Also pushing points onto the board were Sam Coomes, seven; Mike Barels six; Jeff Rowe, four; Dave Stephens, four; and Gary Van Meer, four. Top rebounders were Dave Stephens, Darrow Keezer, and Todd Sprague.

A bright spot in the match was the performance of Coomes, Rowe and Stephens who came off the bench and did an outstanding job.

"Our main job ahead of us is to improve our defense in the remaining games and hold the opponent's scoring down," Tallman said.

Chelsea has a 3-11 record to date.

Frosh Cagers Lose to NW in 2nd Quarter

Frosh cagers fell to Jackson Northwest on Monday, Feb. 26, 66-47, despite a late rally which saw the Bullpups pressing full court in the fourth quarter and the offense outscoring Jackson, 21-14.

"We had poor shooting and a sloppy defense in the second quarter which allowed Jackson to score 21 points to our five. They built a lead we couldn't overcome," Coach Jim Tallman commented.

Leading Bullpup scorer was Geoff Shaw with 13. Mike Barels had 10; Darrow Keezer, six; and Toby Boyd, five. Boyd collected seven rebounds and Keezer, five.

Chelsea travels to Novi today, March 1 for the final game.



WARNING SIGNS OF SPRING: Max Steger may not have spotted the first robin but he did have a close encounter with another of spring's little tricks—the pot hole. While driving to the Chrysler Proving Grounds for his midnight shift, Steger lurched through a gigantic chuck hole on Freer Rd., losing a \$65 hub cap in the process. Returning to the scene of the crime the morning after his shift, Steger began searching the area for his hub cap and found six others while he was at it. In the meantime, a Chelsea Hospital nurse stopped by as she had hit the pot hole the night before also. "We both retrieved our hub caps and left the others with Charlie Cameron," Steger said. If any of these look familiar to you they may be claimed at the Cameron residence, 615 N. Freer Rd. Chelsea's Public Works Department had this pot hole filled in just hours after Steger found his missing hub cap.

CHS Class of '74 Planning Reunion

Chelsea High school Class of '74 is planning a five-year reunion for July 21.

An organizational meeting will be held Wednesday, March 7 at 7:30 p.m. to send invitations and form committees. Anyone interested in helping is invited to attend at the home of Larry Doll, 6925 Jackson Rd., Ann Arbor, or call him at 663-3372 or 994-1559.

Employers are not required to set up pension plans, but if they do, minimum standards must be met under the Employee Retirement Income Security Act (ERISA), according to the U. S. Department of Labor.

Dial-A-Garden Topics Listed

Dial-A-Garden, the system of Start Cool Weather Vegetables Indoors.

pre-recorded daily gardening tips, is sponsored by the Washtenaw County Co-operative Extension Service. The system is in operation 24 hours per day, seven days per week. Interested persons are invited to call 971-1122 at their convenience and receive timely, up-to-date gardening information.

Next week's Dial-A-Garden topics are:

Friday March 2—"Tomato Varieties for Michigan."

Monday, March 5—"Book Review—Edible Wild Plants."

Tuesday, March 6—"Starting Seeds Indoors."

Wednesday, March 7—"Time To

FIREWOOD

\$25

Pick-Up Load

Sunday, March 4

11 a.m. to 2 p.m.

Chelsea Rod & Gun Club

Lingane Rd.

Puritan Colors the Sporting Life®: Sweater and Shirt Go-Togethers
America's favorite carefree knit shirt of 60% cotton, 40% polyester, acrylic.
teams with The Sporting Life® sweaters of 100% Orlon® acrylic.
Matched in color, perfect in design, a great lightweight combo. Sizes M-L-XL-XXL. **puritan**

SHIRTS \$14-\$20
SWEATERS \$24



Store Hours: Open Monday thru Saturday, 8 a.m. to 5:30 p.m.

STRIETER'S MEN'S WEAR

Since 1914

Now you're \$50 closer to owning the Maytag you've always wanted.

\$25 factory refund on Maytag's popular big tub A308 washer



Maytag refund . \$25
Our discount . \$25
YOU SAVE . \$50



Factory Refund Certificate in current magazines... See us for details! Hurry...

We're putting special prices on every Maytag during this event. If you need a dryer to go with your washer, see us now.

See Maytag's stunning new Jetclean™ dishwashers that outclean 'em all. In the regular cycle, gets your dishes cleaner than other leading brands.

We don't try and sell you an extra cost service contract.

Use Your Credit Power on Maytag Dependability

We include normal delivery and installation on washers and dryers

"Maytags are too darn dependable"

HEYDLAUFF'S

113 N. Main St., Chelsea

Ph. 475-1221



Real Estate

By PAUL FRISINGER

REALTOR

RANCH OR TWO-STORY?

The two basic structures of single family homes are the ranch and the two-story home. They both have their pros and cons and the ultimate decision normally rests with the individual's style of living and needs.

A ranch is appealing since living is all on one floor and there are no steps to climb. However, a ranch has disadvantages as well. A one-story house takes up more space on its lot and it has greater foundation cost per square foot of interior living space.

You can get the same interior size on half the amount of foundation in a two-story home. Construction cost per square foot is reduced to a minimum in a two-story house. Despite this cost-saving factor, the national trend has been and still is strongly toward one-story homes. Homeowners don't seem to like climbing stairs.

If there is anything we can do to help you in the field of real estate, please phone or drop in at FRISINGER REALTY CO., 935 S. Main St., Chelsea, Phone: 475-8683; evenings 475-2621. We're here to help!

8th Grade Cagers 2nd In Stockbridge Tourney

On Saturday, Feb. 24, Chelsea's 74 percent from the field in the 8th grade basketball season came to an end with the Bullpups finishing as runners-up in the eight-team Stockbridge tournament.

The 34-25 loss to champion Dansville gave the 8th graders a season record of 5-7. Chelsea was awarded a trophy and individual players received ribbons for their fine efforts.

In the opening tournament game, Chelsea defeated Milan, 28-27, in a closely played contest. Milan had defeated the Bullpups earlier in the season. Leading the attack was David Wojcik who scored 15 points, including 11 of 11 from the foul line. Steve Cattell and Matt McCallum each contributed 4 points.

The second game saw Chelsea defeat Fowlerville, 48-34. Again, David Wojcik paced the 8th grade attack by scoring 21 points. Wojcik's free throw string was stopped at 23 in succession. Matt Villeneuve added seven points and Chris Seitz six. The Bullpups shot

the championship game with the tall Dansville team was a tight one all the way to the end. David Wojcik led Chelsea with 11 points, while Matt Villeneuve added 8; Russell Harris, 4; Randy Krichbaum, 2. The key to this game was rebounds, as the taller Dansville team controlled the boards, while the Bullpups were shooting only 28 percent from the floor.

"It was a good season, and especially exciting. Almost all the games were decided in the final minutes. This year's team has been as fine a group of young men as I've had the privilege to coach. They certainly have a good future ahead of them," Coach Wayne Welton commented.

Season Statistics

David Wojcik—16.8 points per game, leading rebounder, shot 81 percent from foul line, (including 9 in succession), leader in assists and steals.

Matt McCallum—2nd leading rebounder.

Matt Villeneuve—2nd leading scorer, 2nd in assists, steals, and free throwing percentage.

Steve Cattell—Tied for 2nd in steals, fewest violations for a guard.

Chris Seitz—2nd highest percentage shooter.

Russell Harris—3rd leading scorer, 4th leading rebounder.

Randy Krichbaum—3rd leading rebounder.

Team members include: Jon Bentley, Steve Cattell, Mark Brosnan, Pete Eisele, Russell Harris, Dave Harbaugh, Randy Krichbaum, Matt McCallum, Ken Nadeau, Mike Niebauer, Doug Pagliarini, Kevin Richardson, Chris Seitz, Mike Smith, Matt Villeneuve, Frank Waller, David Wojcik, David Weber, and Vaughn Mills, manager.

REMODELING

Residential - Commercial
FREE ESTIMATES

ib V. JENSEN
and SON
LICENSED BUILDER

378 Spring Lake Drive
Chelsea, Mich.
PHONE 475-1820

THE CHELSEA STANDARD

Second Section

CHELSEA, MICHIGAN, THURSDAY, MARCH 1, 1979

Pages 7 - 12



FIRST PLACE SPIKERS: Nine Beach Middle school 7th grade volleyball team members defeated Lincoln, Milan, and Saline during the Lincoln Invitational Tournament held Saturday, Feb. 24. Pictured here, in front, from left, are Debbie Morris,

Tracy Evilsizer, and Lavonne Kruse. Bringing up the rear are Leslie Koeppe, Joyce Robards, and Marie Stapish. Missing from the photo are Donna Mahoney, captain; Julie Dunlap, and Brenda Hoelzer.

Special Olympians Join Volleyball Team 6th In Winter Olympics

Twelve Washtenaw County Special Olympians brought home eight medals from the three-day Winter Olympics held Feb. 21-24 at Schuss Mountain and Shanty Creek near Bellaire.

Attending from Chelsea were Ryan Sweeny, Glenn Passow, Terry Walkow, and Theresa Murphy who went as a representative of the executive board. High Point athletes were Mike Benzinger, Andy Plastowski, Star Hodge, Stacy Hodge, Bob Shipman, Kim Westwood, Mikyung Kim, and Roger Wanty. Chaperones were Doug and Nancy Cooper, and Kyle Hollis.

On Wednesday they took part in several teaching clinics including tubing (sliding downhill on inner tubes) and downhill and cross country skiing. Following a winter wonderland tour, each took part in the opening ceremonies Wednesday evening. More than 850 athletes from five states and Canada participated.

Opening the games were Joe Falls of the Detroit News; former Tiger baseball players Mickey Stanley and Jim Price; former Detroit Lions player Ron Kramer; New York Giants linebacker Brad Van Pelt; and pro bowler Dick Ryan.

On Thursday, Washtenaw's athletes formed a broomball team and captured the bronze medal after defeating Muskegon, 5-1 and Macomb county, 2-0. Terry Walkow acted as a superb goalie in all three games, holding Canada A team to one point in Washtenaw's only loss, 1-0. Scoring in the first game with Muskegon were Glenn Passow with one; Kim Westwood,

one; and Mike Benzinger, three. Passow scored both goals to win the encounter with Macomb county.

Washtenaw really showed their stuff in speed skating, winning six medals. Earning a silver medal was Passow while Ryan Sweeny captured a bronze. Bob Shipman took third; Andy Plastowski, first; Mike Benzinger, first; and Kim Westwood a silver.

The group next formed a toboggan team and won a silver medal in a very close race. In cross country skiing, Roger Wanty took second; Star Hodge, fourth; and Stacy Hodge, fourth.

Other events the team did not enter because it was their first time at the Winter Olympics were snowshoeing, downhill derby, ice block pushing, figure skating, skate and score, and the area of tug-of-war. Next year the area plans to enter all of these events and have a practice winter game of their own in Washtenaw county.

New Washtenaw County

Map Available at

Local Realtors Offices

A brand new, revised and updated map of Ann Arbor and Washtenaw county has been produced by the Ann Arbor Board of Realtors. The supplier of the map is Arrow Map Co., of Newton Upper Falls, Mass. This is the most current map now available in this area. Copies of the new Realtor map are available from local Realtor offices.

BEEF FRONT QUARTERS

\$1.19 lb.

AVG. WT. 170-200 LB.

- 6 pcs. CHUCK ROAST
- 4 pcs. CHUCK STEAK
- 2 pcs. SWISS STEAK
- 2 pcs. ARM ROUND ROAST
- 2 pcs. ENGLISH ROAST
- 14 pcs. RIB STEAK
- 1 pcs. RIB ROAST
- 6 lbs. STEW BEEF
- 12 lbs. SHORT RIBS
- 50 lbs. HAMBURGER

After Processing \$1.60-\$1.65

PORK LOINS

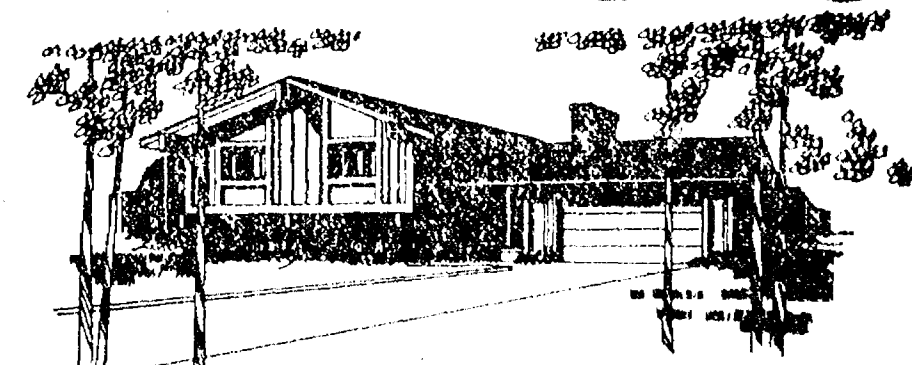
\$1.39 lb.

This Coupon Good For
\$10 OFF
on above order

DUNBAR'S
DEXTER FOOD LOCKERS

Paul Dunbar, Owner 8063 Main St., Dexter
Ph. 426-8466

Plan to have your new home built this Spring.



Start now!

- SAVE — by buying at lower winter prices instead of higher spring prices.
- SAVE — by doing some of the finishing work yourself.
- SAVE — the middleman's profit by being your own boss.
- SAVE — on energy because of CENTENNIAL'S Extra Insulating Features.

Don't wait another minute!! Send for your FREE Idea Book Now!

Mail the coupon or call KALAMAZOO: Howard Kack HUDSON: Bob Hudson
our sales representative Phone: 616/323-2370 Phone: 617/448-6868

GRAND RAPIDS: Don McCallum ANN ARBOR: Sales Office CADILLAC: Jim Proziemi
Phone: 616/363-3248 Phone: 313/788-5010 Phone: 616/778-3227

CENTENNIAL HOMES, INC. DEPT. CS-0222
8331 Plymouth Road
Ann Arbor, Michigan 48105
Please rush me your New Homes Idea Book—with no cost or obligation.
NAME _____
ADDRESS _____
CITY/TOWN _____ COUNTY _____
STATE _____ ZIP _____
PHONE _____
☐ I own a lot. ☐ I can get a lot in.

475-8680

475-8689

115 PARK ST.

CHELSEA, MICH.

MAYER AGENCY

(of Springer-Kleinschmidt Agency Inc.)

Your Local Independent Insurance Agency providing dependable protection and prompt claim payment through 10 of the nation's leading insurance companies.

HOME - AUTO - BUSINESS INSURANCE



Sheridan W. Springer

Charles A. Kleinschmidt

Ruth DeVine

Micky Quackenbush

STYLE CLOSE-OUTS

SALE MARCH 1-10 SALE

FAMOUS BRANDS

DENIM PANTS

BOYS'

Size 5 to 14
Reg. and Slim

PREPS'

25" to 31"
waist

MEN'S

30" to 42"
waist

AS

LOW

AS

\$5.00

per pair

MEN'S VESTED SUITS

TO 1/2 OFF

MEN'S OPEN-END PANTS

TO 1/2 OFF

BOYS' SWEATERS 1/2 OFF

MEN'S SWEATERS 1/3 OFF

BOYS' AND MEN'S
LONG-SLEEVED
KNIT AND CUT'N SEWN
SPORT SHIRTS
1/3 to 1/2 OFF

ALTERATIONS ON
SALE ITEMS AT COST.
ALL SALES FINAL.

VISA
MASTERCARD
AMERICAN EXPRESS

FOSTER'S
BOYS' AND MEN'S WEAR

HOURS:
9:00-5:30 Daily.
Open 'til 8:30
Friday

**Ads
Taken
Till 5 p.m.
Monday**

PUT IT IN THE WANT ADS FOR RESULTS

**Just
Phone
475-1371**

WANT ADS

The Chelsea Standard
WANT AD RATES
PAID IN ADVANCE—All regular advertisements, 15 cents for 25 words or less each insertion. Count each line as a word. For more than 25 words add 3 cents per word for each insertion. "Blind" ads or ads with no return address, add extra per insertion.
CHARGE RATES—Same as cash in advance, with 25 cents bookkeeping charge if not paid before 5 p.m. Monday preceding publication. Pay in advance, send cash or check or money order.
DISPLAY WANT ADS—Rate, \$1.40 per column inch, single column width, only, 8-point and 10-point type only. No borders or boldface type. Minimum 1 inch.
CARDS OF THANKS or MEMORIALS—Single paragraph style, \$1.75 per insertion for 50 words or less, 3 cents per word beyond 50 words.
COPY DEADLINE—5 p.m. Monday week of publication.
ERRORS—Advertisers should check their ads at the first publication. This newspaper will not be liable for errors in the ad where the error occurred. Errors in publication except to the extent of the cost of the ad for the first week's insertion. Adjustment for errors is limited to the cost of portion of the ad where the error occurred.

HELP WANTED—Head groundskeeper, full-time, summer months only, retiree welcome to apply. Job includes maintaining village baseball fields. Pr. 475-9830 for appointment. x41

FULL- & PART-TIME RV sales person. Apply at Astro Mfg. Co., 2055 N. Lima Center Rd., Dexter. x38

THORNTON 475-9193

MAKE THIS HOUSE YOUR HOME! Brick 3-bedroom ranch with full walkout basement. Hardwood floors. Deck off living room. Spacious country kitchen. 10 acres. Chelsea schools. \$89,900.

SOMETHING NEW! Well constructed 3-bedroom ranch just north of Chelsea on 3 acres. Includes a fireplace, 3 bedrooms, and 1 1/2 baths. Carpet allowance. Immediate possession. \$71,500.

CHELSEA CHARMER—Older, well maintained home in the Village of Chelsea. Offers 4 bedrooms, 2 baths, dining room and lots more! Full basement. Close to elementary. \$49,000.

**Robert H. Thornton
Jr. P.C. Realtor**
CHELSEA 475-9193
George Knickerbocker, 475-2048
Daria Bohlender, 475-1478
Helen Lancaster, 475-1198

SAND GRAVEL
KLINK EXCAVATING
Bulldozer — Backhoe
Road Work — Basements
Trucking — Crane Work
Top Soil — Demolition
Drainfield — Septic Tank
Trenching, 5' up
Industrial, Residential, Commercial
CALL 475-7631 13tf

FOR SALE — Approximately 2 acres, country. 2 miles to Chelsea. Ravine, huge oaks, beautiful view. Waterloo Rd. \$19,000 cash. Ph. 475-7465. x27tf

LAND CONTRACTS & MORTGAGES wanted — Land contracts purchased, any amount, anywhere in Michigan. Lowest discounts. Can also make real estate loans. Call Dan Duncan, Ann Arbor Real Estate Co., 688-8595. x31tf

1973 FORD LTD BROUHAM — Station wagon, 8-passenger, leather upholstery, all extras. Good condition. 7618 Grand Ave., Dexter. Ph. 426-8890. x18tf

WANT ADS

RELIABLE BABYSITTER wanted in my home, Sunday and Thursday evenings, for 4-year-old twin girls. Must have references. Call any time, 475-9007. x38

FOR SALE—'77 Ford 1/2 ton pickup, short box, 27,000 miles, better than excellent condition. Ziebarted, \$3,600. Must sell. Ph. 475-1119 between 6-10 p.m. week-days. x38tf

Antique Gallery, Inc.
Invites you to visit its booth at the
ANN ARBOR ANTIQUE SHOW AND SALE
Schuler's Marriott Inn
Plymouth Rd., Ann Arbor
Saturday, March 3, 9 a.m. to 9 p.m.
Sunday, March 4, 9 a.m. to 7 p.m. x38

HELP WANTED—Part-time. Mature retail salesperson for Thurs., Fri., Sat., year-round. No night hours except for Christmas. Please submit a short resume in writing to Box FE-22, care of The Chelsea Standard. x37tf

GERMAN SHEPHERD PUPPIES—Purebred. Black and tan and gray and tan, 8 weeks old. House broken. \$75 each. Ph. 475-7630. x39tf

BINDERY WORKERS NEEDED

Due to our growth and expansion we are in need of individuals to do manual lifting and work. Lift truck experience desired but not necessary.

Apply in person
LITHOCRAFTERS
140 Buchanan St.
Chelsea, Mich. 48118
Equal Opportunity Employer x39

CAR RENTAL by the day, week-end, week or month. Full insurance coverage, low rates. Call Lyle Chriswell at Palmer Motor Sales. 475-1301. x25tf

Complete Body Shop Service
FREE ESTIMATES
Contact Ralph Machesky
Faist - Sprague Buick - Olds, Inc.
475-8664 x51tf

BODY SHOP
COMPLETE FULL TIME
Estimates Available
PALMER FORD
22 S. Main 475-1301 40tf

Floor Covering Is Our Business
TILE—SOLARIAN—HARDWOOD
CARPET—INSTALLATION—REPAIRS
FREE ESTIMATES — 475-8621

Merkel Home Furnishings
PASTURE FOR RENT—For cattle and horses separately. 5 miles east of Grass Lake. Ph. Ed Eisner, (517) 522-8256. x38

WANT ADS

FOR SALE—1974 22 ft. Shasta motor home, 6 sleeper, 7,000 miles, excellent condition. \$8,880. OK. Ph. 475-9489. x38

FRISINGER
\$49,500—Village of Grass Lake, 4-bedroom home, large lot, full screened porch, space for garden.
\$175,000—75-acre farm, Dexter schools, large farm home, barn, outbuildings, shed. Excellent location.
\$72,500—3-bedroom brick ranch, 5 acres. Dexter schools, excellent location.
\$117,000—Custom brick and frame ranch, 3 bedrooms, 2 1/2 baths, family room, dining room, fireplace, 2 1/2-car garage, 10 acres, pole barn. Chelsea schools.

FRISINGER REALTORS
Chelsea 475-8681
935 S. Main St.

Bob Koch 426-4754
Herman Koenn 475-2613
Eva Halverson 426-4483
Paul Frisinger 475-2621
Paul Erickson 475-8111
Dolly Alber 475-2801 x38tf

1977 IMPALA—V-8, power steering and brakes, cruise control, low miles. \$3,700. Ph. 522-8283 after 4 p.m. x38

BORED WITH WINTER? Come work with us until the snow melts! Vitality Seeds needs about 20 nice people to help fill seed orders. Most need no experience but could use some typists and office machine operators. Hours, 8 a.m. - 4:30 p.m. Pay, \$3 per hour. Apply in person, 4115 Jackson Rd., Ann Arbor. Ph. 662-6542 for additional information. Starts Feb. 12. x38tf

PATCHING and PLASTERING. Call 475-7489. x31tf

Gallatin Realty Co.
Yes! The 3 1/2 % Commission is really working.
5 COUNTRY-LAKE LISTINGS
1. BOYCE RD.—1,600 plus sq. ft. house, pole barn and stable, 5 plus acres. \$72,900.
2. HASHLEY RD. — Quality-built ranch with over 1,700 sq. ft. and full basement, pole barn and 10 beautiful acres. \$85,500.
3. HADLEY RD.—Possession May 1. Well-designed ranch with full basement, 2 1/2-car attached garage, 1-2 acres. \$65,500.
4. ALGONQUIN — Portage Lake canal frontage, 1,600 plus sq. ft. ranch, huge master bedroom, great for the king-sized bed. Dock included to canal. \$81,500.
5. CEDAR BEND DRIVE — The executive home, 3 1/2 acres, 5-year-old 2,100 sq. ft. ranch with full basement, in-ground pool, Tamarack Lake access. \$142,900.

CALL
Gallatin Realty Co.
427 N. Main, Ann Arbor
Ph. 994-1202 x38tf

RAWLEIGH PRODUCTS
475-9325 x39

J. R. CARRUTHERS
LICENSED
RESIDENTIAL BUILDER
CUSTOM HOMES
ADDITIONS/FIREPLACES
PATIOS
ROOFING/SIDING/REPAIRS
475-7234
CHELSEA 30tf

MAUSOLEUMS * MONUMENTS
BRONZE TABLETS * MARKERS
BECKER MEMORIALS
6033 Jackson Road
ANN ARBOR, MICHIGAN

WANT ADS

WANTED — Timber to cut for home heating; not a dealer; money payment or share cutting OK. Ph. 475-9489. x38

LOST MOTHER & PUP
ALL BLACK, mixed breed female (Sam) and her tri-colored 5-month puppy (Tabby). Last seen on Riker Rd. near North Lake in Chelsea. Mother has black collar, no tags. Call 475-9604. Reward. x38

FOR RENT—2-bedroom apartment on water, \$250 plus utilities, references and security deposit required. Ph. 475-9306. x38

Special Sale of NEW '78 AUTOMOBILES
Save Hundreds of Dollars!
These must be sold by March 15
'78 ASPEN SE wagon, 6, auto., p.s., p.b., air, classic cream. Stock No. 1652.
'78 VOLARE Premier wagon, 318, auto., p.s., p.b., red. Stock No. 1747.
'78 CHALLENGER, 2600 cc., auto., p.s., silver. Stock No. 1765.
'78 COLT 4-dr., 1600 cc., 4-speed, white. Stock No. 1839.
'78 MAGNUM XE, 400, auto., p.s., p.b., air, black. Stock No. 1842.
'78 SAPPORO, 1800 cc., 5-speed, ballast sand. Stock No. 1859.
'78 CORDOBA, 400, auto., p.s., p.b., air, T-bar roof, red. Stock No. 1883.
'78 CHRYSLER Town & Country wagon, 360, auto., p.s., p.b., air, sable tan. Stock No. 1884.
'78 VOLARE 2-dr., 6, 4-speed overdrive, p.s., red. Stock No. 1903.
'78 ARROW coupe, 1600 cc., 4-speed, yellow. Stock No. 1905.
'78 ARROW GT coupe, 2000 cc., 5-speed, tan. Stock No. 1908.
'78 VOLARE coupe, 6, 4-speed overdrive, p.s., white. Stock No. 1909.

DEMOS
'78 ASPEN SE wagon, 6, auto., p.s., p.b., air, classic cream. Stock No. 1652.
'78 DIPLOMAT 2-dr., 318, auto., p.s., p.b., air, black. Stock No. 1771.

Village Motor Sales, Inc.
CHRYSLER - DODGE
PLYMOUTH - DODGE TRUCKS
Phone 475-8661
1185 Manchester Rd., Chelsea
Hours: 8 a.m. to 5:30 p.m.
Tues. thru Fri. Until 8 Monday
Saturday 9 to 12 x38tf

SUNFLOWER SEED — 50-lb. bag, \$8.50, 25-lb. bag, \$4.50. Also, cracked corn and millet. Ph. 426-8404. x18tf

AMERICAN LEGION HALL Rental — \$75-\$150. Ph. Lena Behnke, 475-9231, evenings and week-ends. 1tf

LEONARD REITH
Master Plumber
Licensed Electrician
Hot Water Heat
18238 N. Territorial Rd.
Chelsea, Mich. 48118
Phone: 475-2044 52tf

We Buy Land Contracts
LARGE OR SMALL, residential or commercial. Lowest discount in Michigan. Ph. Dan Duncan, Ann Arbor Real Estate Co., Realtors. 668-8595. x41tf

QUASAR TV
Sales and Service
Also Service on Most Major Brands
Antenna Installation and Supplies
We Do Home Service.
PORTER'S TV
212 Buchanan St., Chelsea
Ph. 475-8380 46

WANTED—Plow ground and standing hay. Ph. 475-2771. x37tf

CASH FOR LAND CONTRACTS
Any type of real estate throughout Michigan. No commissions or closing costs. First National Accept. Call Free 1-800-292-1550

WANT ADS

X-SALES PEOPLE. X-car sales. National purchasing firm looking for money motivated individuals to supplement our present staff. My people earn \$20,000 plus and have opportunity to own their own business in 1 1/2 years. Will train sharp novice. Call Mr. Solo in Ann Arbor, 971-2860. x38

HELP WANTED—Part-time (7-11 a.m.) driving to Detroit and back 6 days per week. Permanent employment. Ph. 475-1231, 8:30-10 p.m. x38

Sales Administrator
EXPERIENCED PERSON wanted to handle sales responsibilities for manufacturer of components for on-off highway vehicles. Career opportunity. Starting salary upper teens. Full benefit package.
Send resume or call
O & S Manufacturing Division
777 W. 8 Mile Rd.
Whitmore Lake 48189
Ph. 449-4401
Equal Opportunity Employer x38

FOR SALE — 20-gallon O'Dell aquarium with stand and all accessories. Ph. 475-9446 after 5 p.m. x38

MACHINE OPERATORS wanted. New plant in Ypsilanti. Mechanical experience necessary. Excellent training program available. Excellent wages and benefits. For more information call 483-3450. Barfield Mfg. Co., 800 Lowell St., Ypsilanti. x41

Why hire THREE contractors when ONE will do?
HILLTOP, INC.
PLUMBING
HEATING
ELECTRICAL
WE DO IT ALL!
Serving Washtenaw County for the 25th year.
475-2949
8316 Werkner - Chelsea x38tf

Automotive Rust Proofing Cars and Trucks
Village Motor Sales, Inc.
CHRYSLER - DODGE
PLYMOUTH - DODGE TRUCKS
Phone 475-8661
1185 Manchester Rd., Chelsea
Hours: 8 a.m. to 5:30 p.m.
Tues. thru Fri. Until 8 Monday
9 a.m. to 12 noon Saturday 21tf

CAR FOR SALE? Apartment for rent? The Chelsea Standard has a sign for most every need. 300 N. Main St., Chelsea. Ph. 475-1371. 40tf

McCulloch Portable Generators Chain Saws
WE SELL, SERVICE, SHARPEN AND TRADE.

Chelsea Hardware
ROOMS by day, week or month. Excellent for the single man or retiree. Sylvan Hotel, Chelsea. Ph. 475-2911. x31tf

FOR RENT — Fair Service Center for meetings, parties, wedding receptions, etc. Weekdays or week-ends. Contact John Wellnitz, phone 475-1518. x31tf

WANT ADS

DAY HELP NEEDED at McDonough's of Chelsea. Part-time. Apply in person at 1535 S. Main. Minimum wage. x38

HELP WANTED — Foreman for small manufacturing company covering 8-10 persons on an afternoon or midnight shift. Salary commensurate with ability and experience. Full fringe benefits including fully paid Blue Cross. 13 holidays including week between Christmas and New Year's. 2 week vacation. Send resume to Larry Wold, c/o LRI Industries, 11770 Dexter Rd., Chelsea 48118. x38tf

LIVE BAND MUSIC for weddings, parties, banquets, etc. Ph. 475-1811. x38tf

Used Trucks
'77 DODGE W-100 pickup, 4-wheel drive, 318, auto., p.s., p.b. \$4995
'74 DODGE D-100, 318, auto., p.s., air. \$1695

Quality Used Cars
'78 CORDOBA, 318, auto., p.s., p.b., air. \$5495
'75 DART Custom 4-dr., 6-cyl., auto., p.s., low mileage. \$2495
'75 DODGE B-200 Sportsman, 109" wheelbase, 318, auto., p.s., p.b., air. \$1995
'74 OLDS Custom Cruiser wagon, V-8, auto., p.s., p.b., air \$1495
'74 PONTIAC Ventura 2-dr, V-8, auto., p.s., p.b., AM-FM. \$1695
'73 CADILLAC Coupe de Ville, full power, stereo, air. \$1795

Village Motor Sales, Inc.
CHRYSLER - DODGE
PLYMOUTH - DODGE TRUCKS
Phone 475-8661
1185 Manchester Rd., Chelsea
Hours: 8 a.m. to 5:30 p.m.
Tues. thru Fri. Until 8 Monday
Saturday 9 to 12 x38tf

- YOUNG -
We list and sell lake, country and town properties. Eugene Young, Real Estate & Builder, 878-9792, 11586 Dexter-Pinckney Rd., Pinckney 48169. x34tf

PIANO TUNING and repair. Qualified technician. Call Ron Harris, 475-7134. x10tf

FOR SALE — 60 ft. Star mobile home. Good condition. \$4,000. Ph. 475-8906. x38

SNOW PLOWING — Prompt, efficient service. Richard Smith. Ph. 475-8984. x23tf

VACUUM CLEANERS
Authorized Electrolux sales and service.
James Cox
428-8444, or 428-8686
118 Riverside Dr., Manchester 48tf

TRAVEL TRAILERS — 13-ft. and up; 10x55 ft. trailers. John R. Jones Trailer Sales, Gregory, Mich. Phone 498-2655. x43tf

R. L. BAUER Builders
LICENSED AND INSURED
Custom Building
Houses — Garages
Pole Barns
Roofing — Siding
Concrete Work
FREE ESTIMATES
Call 475-1218 31tf

KITCHEN HELP
Part-time
Apply in person.
Chelsea Restaurant
119 S. Main 32tf

WANT ADS

WATERLOO REALTY
PERFECT RETIREMENT HOME with lake access only steps away. Attractive two-bedroom home is well insulated (low utilities). New natural gas forced air heating system. Family room. Vinyl exterior. Enclosed front porch for plants. West side of Patterson Lake. Only \$32,900!
"GOLD RUSH DAYS" VINTAGE—Picturesque large (4,600 sq. ft.) red brick home. Presently used as adult care home. 7 bedrooms, 4 baths. Fireplace in family room. New 24x30 ft. garage. New well and new drainfield. On 20 acres across from State Land in Waterloo Recreation Area. \$140,000. 20 min. from Chelsea.
A NATURAL BEAUTY! 22 acres in the heart of Waterloo Recreation Area to enjoy Summer and Winter fun. Former children's camp has 550 ft. frontage on an all-sports lake, rolling woods, several buildings, plus a huge, open-span activities building with fireplace and large stage (ideal for health spa or private club). 25 min. west of Ann Arbor. \$285,000.
6-ACRE BUILDING SITE, rolling, surveyed, per se no problem, across from state land. 5 1/2 miles from town. Chelsea schools. \$16,900.
8/10 ACRE BUILDING SITE, some trees, nice slope, overlooking Waterloo Mill Pond. Chelsea schools. \$7,900.

WATERLOO REALTY
355 Clear Lake
JOANN WARYWODA, BROKER
Phone 475-8674
Evenings and Sundays:
Sue Leve 1-517-522-5252
Carol Lakatos 475-7129
Evelyn White 475-1066 x38tf

FOUND—Black angora cat. Ph. 475-8591. x38

Custom Built Homes
O—hi We Remodel too
U—can count on us
N—o Job Too Small
T—rim Inside and Out
R—ough-in Only if
Y—ou Want to Finish
S—iding Aluminum, 5" Gutters
I—mmediate Attention
D—ALE COOK & CO.
E—stimates, Free
BUILDERS
Please Call
475-9153
DALE COOK 17tf

FOR RENT — 1979 Ford 15-pass. Club Wagon Buses by the day, week-end, week or month. Insurance. Palmer Ford, 222 S. Main. 475-1301 for rates. x23tf

FOR SALE—FM converter, only 6 months old, perfect condition. \$10. Ph. 663-3050 evenings. x33tf

SEE US for transit mixed concrete. Klump Bros. Gravel Co. Phone Chelsea 475-2530, 4920 Loveland Rd., Grass Lake, Mich. x40tf

HAY — Second cutting. Standing alfalfa. 17 1/2 acres. Ph. 426-4198. x10tf

CORRECTIVE HORSESHOEING and trimming. Mike Brisbols. Ph. 567-3036. x45tf

CHEVROLET — BUICK TOBY FREEMAN
Business (517) 851-7225
Residence (517) 851-7504
C. W. GLENN & SONS, INC.
401 N. Clinton St.
Stockbridge, Mich. 49285 x10tf

WANT ADS

WANTED TO BUY — Lake-front home on Cavanaugh Lake. Ph. (313) 242-7015 after 6 p.m. x41

FOR SALE — 4-year-old, 18-foot Wilderness trailer with carefree awning, self-contained with shower, Stairs six. Also, Sears Super Gamafisher, fiberglass boat, 11 1/2 ft. long, never used. Storage well under center seat. Ph. 475-8233. x37tf

FOR SALE—1979 Yamaha Enticer 340 with speedometer and extra belt. \$1,650. Also 8-track tape recorder. \$55. Ph. 475-8363. x38

WANTED—Young married couple looking for house or apartment in Chelsea. Ph. 475-7179. x38

FOR SALE—Hardwood, seasoned. Face cord 16"x4"x8". Ph. 475-1052. x38

BUYING ALL SILVER and gold coins, paying top dollar. Call for quote. Bob Matthews, (517) 546-4360. x39

ATTIC INSULATION Class I
Cellulose Insulation installed by trained installers
FOAM WALL INSULATION
Highest thermal efficiency of any insulation type.
New and Existing Construction.

FOAM MASTERS
Complete insulation contractor
Licensed and Insured.
475-1625
Free Estimates x41tf

JIM W. FRENCH
Small Dump Trucking
SAND - GRAVEL - STONE
Ph. Chelsea 475-1173 43tf

FOR RENT — 1979 Ford 15-pass. Club Wagon Buses by the day, week-end, week or month. Insurance. Palmer Ford, 222 S. Main. 475-1301 for rates. x23tf

FOR SALE—FM converter, only 6 months old, perfect condition. \$10. Ph. 663-3050 evenings. x33tf

FOR RENT — Fair Service Center for meetings, parties, wedding receptions, etc. Weekdays or week-ends. Contact John Wellnitz, phone 475-1518. x31tf

Your Approval
is the cornerstone of our business

Staffan Funeral Home
"Funeral Directors for Four Generations"
124 PARK STREET PHONE GR 5-1444

BECKER MEMORIALS
6033 Jackson Road
ANN ARBOR, MICHIGAN

QUASAR TV
Sales and Service
Also Service on Most Major Brands
Antenna Installation and Supplies
We Do Home Service.
PORTER'S TV
212 Buchanan St., Chelsea
Ph. 475-8380 46

WANTED—Plow ground and standing hay. Ph. 475-2771. x37tf

CASH FOR LAND CONTRACTS
Any type of real estate throughout Michigan. No commissions or closing costs. First National Accept. Call Free 1-800-292-1550

SCHNEIDER'S GROCERY
CHOICE MEATS - FINE FOODS

1-LB. BOX NABISCO PREMIUM SALTINE
Crackers . . . 63c

10 1/2-OZ. BAG 8 1/2 SIZE FRITO
Corn Chips
OR 8-OZ. BAG
Cheetos . . . 59c

15 1/2-OZ. CAN DEMING'S
Red Salmon . . . \$2.19

6-OZ. TROPICANA FROZEN
Orange Juice 2 for 77c

10-OZ. PKG. ECKRICH
Smok-y-Links . . \$1.19

13-OZ. PKG. NABISCO CHIPS AHoy!
Cookies . . . 89c

1-LB. PKG. FARMER PEET'S RE-PEETER
Sliced Bacon . . \$1.39

1/2-LITRE BOTTLES
Coke, Fresca, Tab, Sprite . . 8 pac \$1.39
(plus deposit)

37-OZ. MOUNTAIN TOP FROZEN
Apple Pies . . . \$1.45

32-OZ. JAR KRAFT
Grape Jelly . . 89c

121 S. MAIN ST.
PHONE 475-7600

Your Store for
Alexander & Hornung's
Smoked Meats

We Accept
U.S.D.A.
Food Coupons

LITTLE WANT ADS! BIG PLUSES FOR BIG RESULTS!

JUST PHONE
475-1371

WANT ADS

BETTER CORN hybrid comes through research. No one does more corn research than Pioneer. The best corn hybrids available. Call Keith Bradbury, 475-1371.

Pierson &
Riemenschneider
475-9101

NEW LISTING—3-bedroom home has a beautiful hilltop setting. Wooded area provides plenty of privacy. Close to town. \$97,500.

HOME AND INCOME — 3-unit home located in the Village of Chelsea. Good investment! Immediate possession. \$54,900.

LOTS & BUILDING SITES—Lovely building site with plenty of mature trees. \$7,900. Two 12-acre parcels located on M-52. Liberal land contract terms. \$24,000. Several 10-acre parcels located on a paved road. Short distance from Chelsea Village. All parcels in Chelsea school system.

Pierson &
Riemenschneider
REALTORS
111 Park St. - 475-9101

EYES:
Jeanene Riemenschneider 475-1469
Norma Kern 475-8132
Patrick Merkel 475-1824
Marilyn Chasteen 475-2894
John Pierson 475-2894
Dal Queenan 475-1819

APPLICATIONS are now being accepted for full and part-time employment at the A & W of Chelsea Restaurant. Apply between 11:30 a.m. and 1:30 p.m. at 1555 Chelsea-Manchester Rd. x39

WEDDING STATIONERY — Prospective brides are invited to see our complete line of invitations and wedding accessories. The Chelsea Standard, 300 N. Main. Ph. 475-1371. x81f

BY OWNER

DEXTER-CHELSEA AREA—Beautifully landscaped 3-bedroom cedar ranch on heavily wooded acre. Spacious living room with bay window and fireplace, formal dining room with beamed ceiling and doorwall onto large 2-level redwood deck. Large country kitchen, full tiled basement and attached 2½-car garage. An outdoor sports paradise in the heart of the 3,000-acre Pinckney Recreation Area. Easy access to Half Moon Lake, hiking and skiing trails. Chelsea schools. \$74,900. Ph. 475-1089. x38

Allen's Plumbing
and
Heating Repair

Ph. 475-2204

ROOFING, siding, gutters, storm windows and doors. For a free estimate, phone 428-7104. Service Roofing Co., Manchester, Mich. x481f

FOR SALE—1972 VW van, excellent cond., new radials, 47,000 miles, no rust. Ph. 682-5730 days, or 878-6820 eves. x11f

CUSTOM

BUMPING and PAINTING
FREE ESTIMATES - ALL MAKES

Get the Best for Less!

FRANK GROHS CHEVROLET
Phone 426-4677 Dexter, Mich.

WANT ADS

NO NEED for wet carpets. Dry clean them with HOST. Use rooms right away. Rent machine, Merkel Home Furnishings, Chelsea, 475-8621. x38

All Insurance Needs

In the convenience of your own home — or mine

N. H. Miles, Allstate
Cali Only 475-8334

Chelsea Plumbing & Heating

QUALITY WORKMANSHIP

REASONABLE RATES

Specializing in

—New Construction

—Remodeling

—Hydronic Heat

GAIL SHEARS
Licensed Journeyman

GARLAND DE YOE
Licensed Master

Ph. 475-1037

ELECTRICIAN JOURNEYMAN

experienced in electrical maintenance of progressive and secondary presses. Electrical maintenance of a high volume manufacturing plant consisting of cranes and electronic panel equipment. Excellent fringe benefits. Ryerson and Haynes, Inc., 2500 Enterprise Dr., Jackson 49203. Ph. (517) 782-8151. x38

SEAMLESS ALUMINUM eases, troughs, roofing, siding, and carpentry work of all kinds. Experienced installers. All work guaranteed. For free estimate, call R. D. Kleinschmidt Co., 428-8836. x311f

Headquarters for

RED WING

WORK SHOES

Vogel's and Foster's

DREAM

THE

AMERICAN DREAM

Own a brand new home

—Large 2-bath ranch, full basement, 2-car garage, fireplace, 5 acres, 1½ miles from Chelsea. \$68,900.

—Darling redwood chalet designed for future expansion on 3 wooded acres. \$52,900.

—Wooded lot on N. Territorial Rd. \$10,000.

—Lots in the village with Sewer & Water. \$9,500.

—Quiet peaceful two acre parcels on Liebeck Road. \$10,900.

—Many larger parcels to choose from—beginning at \$18,500.

—3 unit apartment building on 1½ acres. Live in one, rent the other two; or rent all three. \$600 per month income. Zoned commercial, many uses. A steal at \$61,900.

WEBER HOMES

475-2828 475-9258

WANT ADS

APARTMENT FOR RENT — No pets, or children. Ph. 475-1719. x38

IT'S INEXPENSIVE to clean rugs and upholstery with Blue Lustre. Rent electric shampooer, \$2. Chelsea Hardware. x38

SCHUMM'S

NOW TAKING APPLICATIONS

COOK WANTED — Flexible hours and willing to train the right person.

BARTENDER — Part-time only. No experience necessary.

Ph. 475-2020

Ask Jim for appointment.

LOST—White cock-a-poo, Feb. 21. Half Moon Lake area. Very friendly. Answers to name of "Puff." Ph. 475-7232. x38

FOR RENT—1-bedroom apartment in Gregory. Newly re-decorated. No children or pets. \$190 per month plus deposit. Ph. 498-2883 after 5 p.m. x38

FOR SALE — 7 large Toulouse geese. Will sell separately or in pairs. Ph. 428-7911 evenings. x38

MAINTENANCE

TECHNICIAN

Position requires person with primary skills in electrical and electronic trouble shooting and repair with additional skills in machine repair, two years associate degree in electronics or military training or four years experience on the job.

Apply in person

LITHOCRAFTERS

140 Buchanan St.
Chelsea, Mich. 48118

(Equal Opportunity Employer) x39

WAITRESSES OR WAITERS needed—Full or part-time. Experience not necessary. See manager at Country Kitchen, 8128 Main St., Dexter. x38

FREE HOUSE—Must tear down and haul away. Lots of good lumber and materials for the ambitious. 417 Railroad St. Ph. 475-2828 or 475-1707. Weber Homes. x311f

RON MONTANE

CONSTRUCTION

(RJM, INC.)

—Full carpentry services (rough & finish)

—Additions, remodeling & repairs

—Concrete

—Roofing and Siding

—Cabinets & formica work

—Farm Buildings

—Excavating & trenching

QUALITY WORKMANSHIP

FREE ESTIMATES

Ph. 426-2585

or

475-1080

191f

Window Screens

Repaired

Reasonable rates.

Chelsea Hardware

110 S. Main Ph. 475-1121

301f

Fireplace Builder

Field stone mason, block and brick mason, tuck pointing.

FREE ESTIMATES

Call 475-8025 after 3 p.m.

Patrick Grammatico

475-8520. x391f

WANT ADS

LOST—Brand new, green and yellow boys tennis shoes. Reward. Ph. 475-7509. x38

FOR SALE — 30" G.E. electric range, 30" G.E. refrigerator, both harvest gold. \$250 each. 9-drawer dresser with double mirror. \$35. Ph. 475-2213 or 475-2147. x38

FOR SALE—JD 430 front end loader L.P.L.H. \$2,500. Ph. 428-2241. x38

LIKE NEW—1977 Glaston Sporter XL, 16-foot on E-2 loader trailer, 85 h.p. Johnson, power tilt and trim, bow rider, seats seven. Many extras and accessories. Less than 15 hours on total package. Great skiing and family boat. Beat the 1979 prices at \$6,000. Ph. 475-9506. x39

LAND WANTED — Young family desires to build in Chelsea school district. Preferably close-in or in southeast area. Ph. (517) 851-8575. x39

BY OWNER — 4.36 acres, 1 acre wooded, 2 miles west of Dexter. \$23,900. Ph. 426-2916 after 5:30 p.m. x38

SMALL FARM to rent with large brick home, share with single owner. 25 acres, buildings, horse facility, large garden, small orchard, grapes. Rent reasonable for energetic, responsible couple or single persons. Reply to Box FE-15, in care of The Chelsea Standard. x38

WOODSTOCK

KENNELS

18531 Bush Rd.

Ph. 475-1794

Inside and Outside

Heated Runs

Separate Housing

for Cats

Love Provided

Free

311f

Complete

Body Repair

Service

Bumping — Painting

Windshield and Side Glass

Replacement

Open Monday Until 8

CONTACT DON KNOLL

FOR FREE ESTIMATE

Village

Motor Sales, Inc.

CHRYSLER — DODGE

PLYMOUTH — DODGE TRUCKS

Phone 475-8661

1185 Manchester Rd., Chelsea

Hours: 8 a.m. to 5:30 p.m.

Tues. thru Fri., Until 8 Monday

9 a.m. to 12 noon Saturday

x141f

FOR RENT:

Music Machines

Juke Boxes

for Parties, Receptions or Any Special Gathering.

CALL

Zemke

Operated Machines

Days 662-1771

x381f

CARPET CLEANING — 12 cents a square foot. Free estimates. 12 years experience. Ph. 475-9879. x191f

ROOFING SPECIALIST—All types of roof repairs, homes, barns, commercial. Insurance repairs. Asphalt shingles, hot built-up roofing, cedar-slate tile-asbestos. Awnings and porch enclosures. Siding and storm windows. Call Joe Hayes for free estimates. Manchester, 428-8520. x391f

CALL OR STOP IN

CHELSEA GLASS, INC.

WORKMANSHIP AND MATERIALS FULLY GUARANTEED

Open Daily 8 a.m. to 5 p.m.; Sat. 8 a.m. to 1 p.m.

140 W. Middle, Chelsea Phone (313) 475-4667

WE REPAIR AND REPLACE:

★ STORE FRONTS ★ MIRRORS

★ FURNITURE TOPS ★ PATIO DOORS

★ SHOWER DOORS ★ TUB ENCLOSURES

★ THERMOPANES ★ AUTO GLASS - Including Windshields

Free Pick-up and delivery on auto work.

Storm Door & Window Reglazing & Screens

COMMERCIAL BUILDINGS OR RESIDENTIAL

PROMPT SERVICE REASONABLE PRICES

WANT ADS

FOR RENT—Separate living quarters in newly built house, 2 bedrooms, separate entrance, \$350 per month including utilities, 8 miles north of Chelsea. Couple or working woman. References. Ph. (517) 851-8588. x38

FREE PUPPIES — Mixed small breed. Partially housebroken. Ph. 475-2769. x38

SECRETARY - CASE-AID needed full-time. Requires good typing and clerical skills. Mature and responsible person with ability to get along well with people. Salary commensurate with experience and skills. Ph. 475-8693 between 9 a.m. & 5 p.m. x38

FULL-TIME SHOE SALES person. Experience preferred but not necessary. Apply in person, Nobile Shoe Store, Westgate Shopping Center, Ann Arbor. x38

ELECTRIC STOVE, apt. size, 21", upright home freezer, 31"x66", 3 small 24"x24" refrigerators; gas clothes dryer, Speed Queen; tables, chairs, lots of other things. 7997 Grand, Dexter. Ph. 426-3355 persistently. x38

75 DODGE, ¾-ton, 4-wheel drive, club cab, V-8, power steering and brakes, air, 30-inch cap, 27,000 miles. Ph. 475-7106. x38

MICHIGAN CERTIFIED soy beans, \$9.75 per bushel. Michigan certified marshall's seed oats treated with Vitavax, \$3.25 per bushel. Brable Farm, Britton 49224. Ph. (517) 451-4010 or (517) 423-5663. Prices subject to change without notice. x371f

STEP UP TO

KOZMA

CONSTRUCTION

And

Step

Down

In

Price

LICENSED

BUILDER

FREE ESTIMATES

COMPLETE

CONSTRUCTION

SERVICES

CALL

LEN KOZMA

475-7452

WANTED TO RENT—Small home for couple and pet. Needed in June. Ph. 878-6286. x41

CAR FOR SALE — 1976 Fiat 128 sedan, 2-door, front wheel drive, AM-FM radio, low mileage, beautiful condition. Asking \$1,800. Ph. 475-1578 after 5 p.m. x40

FOR SALE — 1976 Olympia electric typewriter. Well maintained, cleaned yearly. Portable with case, \$100. Ph. 663-3050 evenings. x331f

WANTED — Apprentice for small cabinet shop, experience preferred, part-time, hours flexible. Call for appointment, 475-8751. x38

FOR SALE — Vacation home on wheels. Strong, dependable, 1978 Pace Arrow. 26 feet of living area. Loaded with options for comfort and safety. Excellent condition. Sacrifice at \$16,500. Ph. 475-7465. x341f

SNOW PLOWING — Duane Dorr. Ph. 475-8365. x42

NO HUNTING

SIGNS

Now Available

at

The Chelsea Standard

Commercial & Investment

REAL ESTATE

TOOL SHOP—Excellent brick and block building, 2,700 sq. ft., 10' ceilings, plus storage building, 24'x36', 1.3 ac., all machinery and equipment. Buildings and machinery may be purchased separately. 475-9101.

WE HAVE immediate buyers for farms suitable for beef cattle operations.

124-ACRE FARM—Classic farmhouse, 5 bedrooms, study, smokehouse, several large barns and out-buildings, good productive ground, excellent road frontage. Terms available. 475-9101.

PLUMBING BUSINESS—An excellent business opportunity with an extensive customer list, fully equipped, good cash flow, tremendous potential. Terms possible. 475-9101.

HORSE TRAINING FARM—Includes ½ mile track, new 9,800 sq. ft. training barn, 21 stalls, exercise pool, full-time trainer will stay, good cash flow. Excellent opportunity for a knowledgeable horseman. 475-9101.

Pierson & Riemenschneider

Member of

Partridge & Assoc. Commercial Realtor Network

475-9101

Cards of Thanks

THANK YOU

I deeply appreciate all who were kind and thoughtful during my husband's illness and death.

Thank you.

Ruth Luenser.

CARD OF THANKS

I would like to thank my relatives, neighbors and friends for gifts, cards, visits and telephone calls while I was in the hospital.

Dorothy Mepians.

Area Students Earn Degrees at EMU

One student from Dexter and two from Whitmore Lake received degrees at the winter commencement of Eastern Michigan University Dec. 17.

Dexter's Rebecca Lynn Pierce, 7648 Forest St., received her MA degree. From Whitmore Lake, Maria Louise Larson, 77 Whittier, was presented with an MA and William Brian Totten, 5184 Strawberry Lake Rd., received his SpA.

Local Man's Grandson Re-Enlists in Navy

Navy Chief Aviation Electronics Technician James H. Park, son of Alberta L. Park, and grandson of E. E. Winans of 154 Park St., Chelsea, has re-enlisted for four years while serving at the Naval Air Maintenance Training Detachment, Oceana Naval Air Station, Virginia Beach, Va.

He joined the Navy in November 1956.

PUBLIC HEARING

A public hearing will be held in the Village Council Chambers, Tuesday, March 6, 1979, beginning at 7:30 p.m. to consider the 1979 Village Budget.

A copy of the budget is available for public inspection in the Office of the Village Administrator, 104 E. Middle Street, Chelsea.

VILLAGE OF CHELSEA

Thomas Neumeyer, Clerk

DEXTER TOWNSHIP BOARD OF REVIEW

Notice is hereby given to all persons liable to assessment for taxes in the

TOWNSHIP OF DEXTER

County of Washtenaw, State of Michigan
That the Assessment Roll of said Township as prepared by the undersigned will be reviewed by the Board of Review on March 5, 1979.

Appeals and conferences with taxpayers will be heard at

DEXTER TOWNSHIP HALL

6880 Dexter-Pinckney Road, on

MONDAY, MARCH 12, 1979

from 9 a.m. to 4 p.m.

and on

TUESDAY, MARCH 13, 1979

from 4 p.m. to 8 p.m.

at which time the Board of Review will be in session from 9 a.m. to 4 p.m. of said days. Upon request of any person who is assessed on said tax roll or of his or her agent and upon sufficient cause being shown, said Board of Review will correct the assessment as to such property in such manner as will in their judgment make the valuation just and equal.

Such assessment tax roll as reviewed and approved by said Board of Review will be the assessment roll of said Township of Dexter for the year 1979.

The County Board of Commissioners of Washtenaw County has proposed the following starting ratios for Dexter Township for the year 1979: Real Property Ratio 46.24, Factor 1.08; Personal Property Ratio 50.00, Factor 1.00.

JOHN TANDY, Supervisor

Dated: Feb. 12, 1979.

VILLAGE ELECTION

To the Qualified Electors:

NOTICE IS HEREBY GIVEN, That an Annual Village Election will be held in the

VILLAGE OF CHELSEA

State of Michigan

SYLVAN TOWNSHIP HALL

112 W. Middle St.

Within said Village on

Monday, March 12, 1979

FOR THE PURPOSE OF VOTING FOR THE ELECTION OF THE FOLLOWING OFFICERS, VIZ:

Village Clerk for Two Years
2 Library Board Trustees for Three Years

Notice Relative to Opening and Closing of Polls
ELECTION LAW, ACT 116, P. A. 1964

SECTION 720. On the day of any election the polls shall be opened at 7 o'clock in the forenoon, and shall be continuously open until 8 o'clock in the afternoon and no longer. Every qualified elector present and in line at the polls at the hour prescribed for the closing thereof shall be allowed to vote.

The POLLS of said election will be open at 7 o'clock a.m. and will remain open until 8 o'clock p.m. of said day of election.

THOMAS NEUMEYER, Village Clerk

+ Services in Our Churches +

FIRST UNITED METHODIST CHURCH

The Rev. Marvin H. McCallum, Pastor

Friday, March 2—

8:30 p.m.—Christian Home group in the home of Jim and Carolee Hoffmeyer.

Sunday, March 4—

10:00 a.m.—Worship service. Communion Sunday. (Crib nursery for infants up to the age of 2 and church school for children ages 2 through 5.)

10:20 a.m.—Church school for children from kindergarten through 6th grade.

11:00 a.m.—Coffee and punch hour.

11:10 a.m.—Adult discussion group.

11:10 a.m.—Junior and senior high church school.

6:00 p.m.—Confirmation training—youth group.

6:00 p.m.—Senior high UMYF.

Monday, March 5—

8:00 p.m.—Work area on education in the education building.

Tuesday, March 6—

7:30 p.m.—Youth bell choir.

Wednesday, March 7—

3:30 p.m.—Kinder choir.

4:00 p.m.—Prayer choir.

7:00 p.m.—Adult bell choir.

8:00 p.m.—Chancel choir.

12:00 p.m. (noon)—Lenten study group in the Crippen building.

7:00 p.m.—Parish-staff relations committee.

BAHA'I FIRESIDE

Every Thursday—

8:00 p.m.—At the home of Toby Peterson, 705 S. Main St. Anyone wishing to learn about the Baha'i faith is welcome.

Legal Notices

MORTGAGE SALE

Default having been made in the conditions of a certain mortgage made by LAURENCE LAZARUS and HELEN S. LAZARUS, HIS WIFE, to THE EQUITY TRUST ASSURANCE SOCIETY OF THE UNITED STATES, a corporation organized and existing under the laws of the State of New York, dated the 2nd day of May, A.D. 1968, and recorded in the office of the Register of Deeds for the County of Washtenaw, State of Michigan, on the 3rd day of May, A.D. 1968, in Liber 1983 of Washtenaw County Records, on page 181, which mortgage was assumed by Raymond R. Brockette and Patsy Brockette, his wife, on which and mortgage there is due to the said Society of the United States, the sum of NINE THOUSAND FIFTY EIGHT AND 23/100 Dollars (\$9,558.23); and no suit or proceeding at law or in equity having been instituted to recover the debt secured by said mortgage or any part thereof; now, therefore, by virtue of the power and authority contained in said mortgage and the statute in such case made and provided, notice is hereby given that on Thursday, the 15th day of March, A.D. 1979, at ten o'clock in the forenoon (Local Time), said mortgage will be foreclosed by a sale of public sale to the highest bidder immediately inside the westerly entrance to the Washtenaw County Building in the City of Ann Arbor, Washtenaw County, Michigan (that being the building in which the Circuit Court for the County of Washtenaw is held), of the premises described in said mortgage, or so much thereof as may be necessary to pay the amount due on said mortgage as aforesaid, with interest thereon at the rate of 7 per cent and all legal costs, charges and expenses, including the attorney's fee allowed by law, and any sum or sums which may be paid by the undersigned at or before said sale for taxes and/or insurance on said premises, which premises are described as follows: All the certain piece, parcel or tract of land, together with all and singular the tenements, hereditaments and appurtenances thereof.

The length of the redemption period is six months from the date of such sale.

Dated: February 8, 1979.

THE EQUITY TRUST ASSURANCE SOCIETY OF THE UNITED STATES

Mortgagee

Attorneys for Mortgagee

Skinner, Canfield, Padock & Stone

Attorneys for Mortgagee

300 Wabash Building

Birmingham, Michigan 48011

Feb. 8-15-22-Mar. 18

FAITH EVANGELICAL LUTHERAN CHURCH

8575 North Territorial Rd., Dexter
The Rev. Mark Porinsky, Pastor

Thursday, March 1—

8:00 p.m.—Choir.

Friday, March 2—

7:30 p.m.—Inquirers.

Saturday, March 3—

11:00 a.m.—Area youth group tobogganing.

7:30 p.m.—Adult Fellowship in the parsonage.

Sunday, March 4—

9:00 a.m.—Sunday school, adult class.

10:00 a.m.—Worship service with communion.

Sermon on the worthy reception of the Lord's Supper.

Tuesday, March 6—

6:00 p.m.—Beginner's confirmation.

Wednesday, March 7—

9:45 a.m.—Bible brunch at the Stacey's.

4:30 p.m.—Advanced confirmation.

8:00 p.m.—Lent II.

Coffee: Fly.

Thursday, March 8—

8:00 p.m.—Choir.

OUR SAVIOR LUTHERAN CHURCH

1515 S. Main, Chelsea

The Rev. Gene A. Wyssman, Pastor

Every Sunday—

9:00 a.m.—Sunday school.

10:30 a.m.—Worship service.

IMMANUEL BIBLE CHURCH

145 E. Summit St.

The Rev. Ron Little, Pastor

Every Sunday—

9:45 a.m.—Sunday school, nursery provided.

11:00 a.m.—Morning worship, nursery provided.

6:00 p.m.—Evening worship.

Every Wednesday—

7:00 p.m.—Family hour, prayer meeting and Bible study.

ST. BARNABAS EPISCOPAL CHURCH

20500 Old US-12

The Rev. Fr. Terrence F. Beaumont, B.S.P.

10:00 a.m.—Holy Communion, first, third, and fifth Sundays, and 7:30 p.m. every Wednesday.

10:00 a.m.—Morning prayer, second and fourth Sundays. Church school and nursery every Sunday.

Every Wednesday—

8:15 p.m.—Bible study and discussion groups.

First Wednesday of every month—

Bishop's Committee.

Third Thursday of every month—

Episcopal church women.

CHELSEA BAPTIST CHURCH

337 Wilkison St.

The Rev. Thode B. Thodeson, Pastor

Every Sunday—

9:45 a.m.—Sunday school for the whole family.

11:00 a.m.—Morning worship.

6:00 p.m.—Evening fellowship.

Every Wednesday—

7:00 p.m.—Mid-week prayer and share.

ST. MARY CATHOLIC CHURCH

The Rev. Fr. David Philip Dupuis, Mass Schedule:

Every Saturday—

4:00-5:00 p.m. Confession.

7:00 p.m.—Mass.

Immediately after 7 p.m. Mass, Confession.

Every Sunday—

7:00 a.m., 9:00 a.m., 11:00 a.m., —Mass.

ST. PAUL UNITED CHURCH OF CHRIST

The Rev. R. J. Ratliff, Pastor

Thursday, March 1—

9:45-11:00 a.m.—Lenten study group. "Women in the Bible."

7:30 p.m.—Building and grounds.

7:30 p.m.—Church school teachers' meeting.

Friday, March 2—

1:00 p.m.—World Day of Prayer. Babysitting provided. Service at Congregational church.

Saturday, March 3—

9:00 a.m.—Confirmation classes.

Sunday, March 4—

9:00 and 10:30 a.m.—Church school.

10:30 a.m.—Worship service with communion.

7:00 p.m.—SYF meeting.

Monday, March 5—

6:00-10:00 p.m.—Boy Scout potluck and Court of Awards.

Tuesday, March 6—

3:30 p.m.—Joyful Noise.

7:30 p.m.—Board of Christian Education.

Wednesday, March 7—

3:30 p.m.—Junior Choir.

7:30 p.m.—Mid-week Lenten service.

Thursday, March 8—

9:45 a.m.—Lenten study group.

7:30 p.m.—Spiritual Life Department.

ZION LUTHERAN CHURCH

Corner of Fletcher and Waters Rds.

The Rev. John R. Morris, Pastor

CONGREGATIONAL CHURCH

(United Church of Christ)

The Rev. Carl Schwarm, Pastor

Every Sunday—

10:30 a.m.—Worship service and Sunday school. Nursery provided for children, infants through 5 years.

CHURCH OF CHRIST

13881 Old US-12, East

Evangelist John M. Hamilton

Every Sunday—

10:00 a.m.—Church school.

11:00 a.m.—Worship service.

Nursery will be available.

6:00 p.m.—Worship service.

7:30 p.m.—Bible study.

FIRST ASSEMBLY OF GOD

The Rev. Richard Coury, Pastor

Every Sunday—

9:45 a.m.—Sunday school.

11:00 a.m.—Worship service.

6:00 p.m.—Evening worship.

Every Wednesday—

7:00 p.m.—Christ's Ambassadors Missionettes. Bible meditation and prayer.

FIRST UNITED METHODIST

Parks and Territorial Rds.

The Rev. Larry Nicols and the Rev. David Goldsmith, Pastors

Every Sunday—

9:15 a.m.—Morning worship.

10:00 a.m.—Sunday school.</

BOWLING

Junior House Girls

Standings as of Feb. 22

Backdoor Party Store	63	37
Coolman Parking	61 1/2	38 1/2
Manchester Car Wash	56 1/2	43 1/2
Cliff's Ace Hardware	56	44
Kozy Kitchen	48	48
K & W Equipment	47 1/2	52 1/2
Wolverine Lounge	46 1/2	53 1/2
Chelsea Lanes	43	55
W. C. Klep	38	62
Drakes	38	62

140 games and over: T. Hatch, 142; T. Sanderson, 171; J. Granger, 142; D. Bragg, 145; O. Kouba, 215; J. Cyers, 140, 144, 161; L. Rogers, 158; K. Curry, 143; P. Elliott, 178; 176; P. Devulder, 151; S. Ratzlaff, 143, 150, 144; B. VanDeven, 146; J. Duval, 167; K. Stautz, 150, 147; T. Siadling, 176, 149; K. Kensler, 156; S. Lobbestael, 145.

425 series and over: T. Sindlinger, 404; P. Elliott, 475; S. Ratzlaff, 401, 407; J. Duval, 428; O. Kouba, 480; J. Cyers, 445; T. Sanderson, 425.

Snoopy Peanut League

Standings as of Feb. 24

Kool Kids	46	20
Red Barons	44	22
New Ones	42 1/2	23 1/2
Bad News Bowlers	37	29
Chelsea Dragons	20	46
Shooting Stars	9 1/2	56 1/2

70 games: M. Ryan, 89, 74; J. Fletcher, 86; J. Gray, 126, 108; S. Baker, 78, 101; Jennifer Boyer, 73; L. Boyer, 76; T. Rowe, 82; D. Harris, 74, 76; T. Harook, 151, 104; L. Walton, 94, 96; D. Buku, 89, 107; J. Walldyke, 83, 90; Joel Boyer, 87; Ricky Finch, 73, 72; L. Hafner, 98, 94; S. Wolak, 93, 73; M. Kyte, 72.

125 series: D. Buku, 196; J. Walldyke, 173; Joel Boyer, 141; Ricky Finch, 145; L. Hafner, 192; S. Wolak, 166; T. Rowe, 189; D. Harris, 173; T. Harook, 255; L. Walton, 190; M. Ryan, 163; J. Fletcher, 150; J. Gray, 234; S. Baker, 179; L. Boyer, 143.

REGENCY TRAVEL

Presents

AIR ONLY SPECIALS

Athens	from \$519
Bangkok	from \$479
Berlin	from \$199
Brussels	from \$184
Hong Kong	from \$429
Israel	from \$479
Jakarta	from \$559
Korea	from \$728
Chicago Departure	
Kuala Lumpur	from \$514
London	from \$177
Manila	from \$425
Singapore	from \$519
Taipei	from \$429
Tokyo	from \$514
Chicago Departure	

One Week Bargains*

Acapulco	from \$295
Aruba	from \$341
Bonair	from \$341
Cancun	from \$335
Costa Rica	from \$409
Coxumel	from \$369
Curacao	from \$341
Florida Fly-Drive	from \$283
Freeport	from \$264
Grand Cayman	from \$359
Guadeloupe	from \$439
Hawaii	from \$479
Ixtapa	from \$345
Jamaica	from \$295
London	from \$669
Martinique	from \$509
Mazatlan	from \$339
Mexico, 3 cities	from \$333
Nassau or Paradise Island	from \$288
Puerto Rico	from \$459
Rio	from \$469
(New York City Departure)	
Ski Utah	from \$359
St. Croix	from \$479
St. Maarten	from \$499
St. Thomas	from \$499
Tahiti	from \$699
Chicago Departure	

Air/Sea Cruise*

From \$679

Call for Wide Cruise Selection

Week-End Specials*

Chicago	from \$66
Las Vegas	from \$196
Montreal	from \$99
New York City	from \$193
Toronto	from \$38

*Based on Double Occupancy

Around the World
in 80 Days or Less
from \$999

REGENCY TRAVEL

The Friendly Tour Store on the Corner

665-6122

601 E. William (Corner Maynard)

ANN ARBOR, MICH. 48104

Chelsea Lanes Mixed

Standings as of Feb. 23

VFW	109	68
Federal Screw Outlaws	104	64
Ann Arbor Centerless	100	75
Hawley Truck Repair	98	77
White Lightning	98	77
Hav-A-Electric	94	81
Fox Point Flashes	91	84
North Lake Dunlappers	89	88
Ken's Glass	85	90
Fireballs	83	92
Accra Gauge	74	101
Michigan Mutual	68	107
King Pins	67	108
Wire & Fire	58	110

Women, 425 series and over: S. Clark, 470; D. Oesterle, 464; L. Behnke, 434; D. Hawley, 445; S. West, 510; C. Hepburn, 440; D. Keizer, 458; N. Keizer, 450.

Men, 475 series and over: R. Clark, 506; A. Oesterle, 489; A. Sannes, 527; F. White, 491; R. Zatorski, 819; N. Jose, 489; R. Pleske, 542; N. Lee, 514; L. Keizer, 531.

Women, 150 games and over: S. Clark, 189; D. Oesterle, 170, 154; J. Buckner, 152; L. Behnke, 183; D. Hawley, 182, 178; H. Fox, 159; S. West, 170, 178, 187; J. Jose, 162; R. Presnell, 163; C. Hepburn, 160; E. Lee, 158; D. Keizer, 156, 163; N. Keizer, 167.

Men, 173 games and over: R. Clark, 189; D. Williams, 171; A. Sannes, 181; F. White, 215; R. Zatorski, 181, 184; W. Weston, 178; N. Jose, 190; R. Pleske, 179, 201; N. Lee, 191; L. Keizer, 188.

Chelsea Suburban

Standings as of Feb. 21

Log Cabin Restaurant	65 1/2	38 1/2
Chelsea Pharmacy	64 1/2	39 1/2
Dancer's	60	44
Dairy Queen	58	46
Mark IV Lounge	56 1/2	47 1/2
Awards & Specialties	53	51
Dana Dee-Lites	51 1/2	52 1/2
State Farm	50	54
Chelsea Assoc. Builders	46 1/2	57 1/2
Ricardo's	45 1/2	58 1/2
Frisinger Realty	40	64
Chelsea State Bank	33	71

425 series and over: P. Harok, 508; E. Harmon, 503; A. Hocking, 486; D. Keizer, 478; T. Monroe, 471; F. Cole, 468; M. Vasas, 473; E. Yocum, 468; S. Nicola, 467; E. Miller, 458; S. Hafner, 455; D. Vargo, 450; L. Beeman, 447; J. Schulze, 441; D. Keizer, 435; S. Bowen, 439; M. De La Torre, 435; L. Cobb, 426; A. Bucholz, 435.

150 games and over: P. Harok, 162, 178, 169; E. Harmon, 170, 168, 167; D. Hocking, 184, 180; D. Keizer, 181, 157; T. Monroe, 179, 159; F. Cole, 180, 150; M. Vasas, 196; E. Yocum, 172, 160; S. Nicola, 159, 160; E. Miller, 162, 163; S. Hafner, 169; D. Vargo, 151, 162; L. Beeman, 168, 152; J. Schulze, 174; S. Bowen, 159; D. Hawley, 156; B. Kunzelman, 150; A. Bucholz, 160, 163; A. Fahrner, 152; L. Cobb, 154; C. Risner, 165; P. Hartmann, 130; M. Knofski, 150; D. Richmond, 166; E. Schulz, 154; B. Murphy, 151.

Unknowns League

Standings as of Feb. 21

Miller High Life	107	68
G & L's	102	80
Jynx	93 1/2	88 1/2
K & C's	90	82
Streakers	86	96
Lucky Strikes	65 1/2	116 1/2

Games over 140: D. Lukasik, 152; A. White, 166, 140; K. Green-Leaf, 160; J. Tuttle, 162; D. Taylor, 140; J. Sweet, 167; S. Cobb, 149; B. Cobb, 179, 146; L. Clark, 156.

Bulldogs Mixed

Standings as of Feb. 22

H.D. DeBurring	58 1/2	41 1/2
Richardson's Asphalt	57 1/2	42 1/2
Norm's Sales	57	43
Dottie-O-Dairy	54 1/2	45 1/2
Smith's Service	51	49
Spadafore's	45	55
Joe's Bar & Grill	41 1/2	58 1/2
Rowdies	35	65

Women, 150 and over: S. Nix, 164, 163, 189; B. Bush, 155, 159, 150; C. Able, 161; W. Jackson, 168, 183; P. Smith, 164; J. Bennett, 152; T. Kaiser, 183, 190, 156, 151; M. Stafford, 163, 201, 154; J. Groom, 158, 154; B. Bush, 193; O. Vasher, 172; M. Lozier, 151.

Men, 170 and over: B. Smith, 183; L. Nix, 189; M. Jackson, 172, 170; B. Smith, 202, 201; T. Colvia, 171; L. Nix, 170, 180, 176, 222; T. Stafford, 176; B. Jackson, 193; B. Van Riper, 173, 170; B. Smith, 194, 171, 210; B. Van Riper, 183; T. Dehn, 187; J. Lozier, 190; L. Leach, 177; T. Stafford, 171.

Senior House League

Standings as of Feb. 28

Washtenaw Eng.	43	13
Steele's Heating	38	18
McCalla Feeds	38	18
Schneider's Grocery	36	20
Bauer Builders	35	21
Freeman Machine	33	23
Captains Table	32	24
Village Motors	32	24
Frank Grohs Chevrolet	29	27
Central Fibre	28	28
Dairy Queen	27	29
Kilbreath's	27	29
K. of C.	27	29
S. J. Custom	25	31
C & J Body	22	34
Walt's Barber Shop	15	41
Deansburro	13	43
Chelsea Lumber	4	52

600 series: B. Ervin, 626; B. Kelly, 600.

525 and over series: B. Stacey, 633; R. Spaulding, 529; A. Fleischman, 588; L. Keizer, 545; M. Leldner, 531; R. Zatorski, 527; C. Fore, 526; K. Unterbrink, 545; E. Buku, 534; H. McCalla, 541; J. Harok, 538; D. Buku, 568; N. Fahrner, 548.

210 and over games: B. Ervin, 244, 215; P. Kelly, 223; R. Spaulding, 222; A. Fleischman, 211; M. Sweet, 214; D. Buku, 212.

Women's Bowling Club

Standings as of Feb. 21

Parish Cleaners	72	28
Chelsea Milling	59	41
Palmer Ford	59	41
Laura's Beauty Salon	58 1/2	41 1/2
Washtenaw Eng.	56	44
DD DeBurring	54	46
Heller Electric	54	46
Jiffy Mixes	50	50
Palmer Leasing	50	50
Dana Diamonds	48 1/2	51 1/2
Alley Cats	47 1/2	52 1/2
Norris Electric	43 1/2	56 1/2
Freeman Machine	40 1/2	59 1/2
Wolverine Bar	40	60
Good Time Girls	36	64
Klink Excavating	31 1/2	68 1/2

500 series and over: L. Orlovski, 568; C. Bradbury, 501.

450 series and over: J. Andarjese, 493; P. Fitzsimmons, 477; F. Andrews, 474; S. Ringe, 471; D. Alber, 468; B. Anderson, 463; P. Poertner, 463; R. Hummel, 462; A. Fahrner, 460; N. Packard, 459; N.

Rolling Pin League

Standings as of Feb. 27

Grinders	72	32
Poachers	69	35
Egg Beaters	61 1/2	42 1/2
Sugar Bowls	57 1/2	46 1/2
Spooners	57 1/2	46 1/2
Coffee Cups	56	48
Beaters	55	49
Kitchen Kapers	52 1/2	51 1/2
Blenders	52	52
Mixers	51 1/2	52 1/2
Brooms	51	53
Kookie Cutters	48	56
Dishwashers	48	58
Jolly Mops	46	58
Pots	45 1/2	58 1/2
Mopper Uppers	42 1/2	61 1/2
Jelly Rollers	37 1/2	66 1/2
Silverware	35	69

500 series and over: J. Shepherd, 555; P. Harok, 574; J. Edick, 505.

425 series and over: S. Bowen, 437; P. Poertner, 470; D. Klink, 436; G. Clark, 472; G. Klink, 432; E. Whitaker, 498; J. Cronkite, 453; D. Farrington, 428; B. Haist, 467; A. Grau, 446; C. Baker, 451; M. Walz, 491; A. Classon, 464; E. Williams, 433; B. Torrice, 445; K. Hamel, 456.

150 games and over: D. Ringe, 175; S. Bowen, 157; P. Poertner, 187; D. Klink, 153, 186, 157; G. Clark, 161, 164; G. Klink, 153, 157; E. Whitaker, 201, 168; J. Cronkite, 156, 155; A. Oetzman, 151; D. Farrington, 152, 155; J. Shepherd, 213, 198; B. Haist, 180; B. Wolfgang, 163; A. Grau, 159, 158; C. Baker, 162; P. Harok, 176, 187, 211; P. Borders, 190; M. Walz, 156, 157, 178; A. Classon, 152, 168; D. Pfizenmaier, 154; B. Kies, 154; S. Bauer, 167; F. Andrews, 188; B. Van Gorder, 178; J. Edick, 188, 183; B. Torrice, 150; A. Boote, 182; K. Hamel, 159, 152.

Junior House League

Standings as of Feb. 22

Broderick Shell	128	47
Rockwell International	101	74
F. J. Siller & Co.	87	78
Smith's Service	85	80
Ypsi Asphalt	84	81
Chelsea Lanes	82	83
Jiffy Mixes	82	83
Mark IV Lounge	87	88
3-D Sales & Service	87	88
Mich. Livestock Exch.	87	88
Hanco Sports	85	90
Associated Drywall	84	91
Washtenaw Eng.	82	93
Tom Milligan Co.	80	95
Matco Tools	78	97
D. D. DeBurring	78	97
Micro Data Devices	69	106
Roberts Paint & Body	59	116

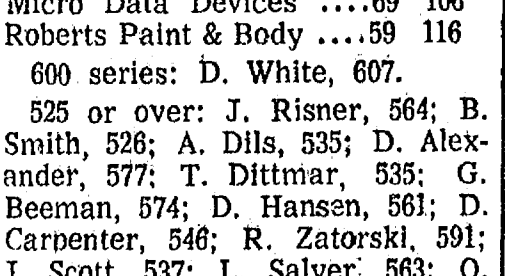
600 series: D. White, 607.

525 or over: J. Risner, 564; B. Smith, 526; A. Dils, 535; D. Alexander, 577; T. Dittmar, 535; G. Beeman, 574; D. Hansen, 561; D. Carpenter, 546; R. Zatorski, 591; J. Scott, 537; L. Salyer, 563; O. Cavender, 548; P. Fletcher, 559; J. Harok, 534; K. Schiller, 531; O. Hansen, 580; D. Adams, 538.

210 or over: D. White, 226, 213; W. Kruse, 212; D. Alexander, 214; L. Fahrner, 213; D. Hansen, 228; D. Carpenter, 232; M. Leidner, 213; F. Barkley, 211; B. Schenk, 213; R. Zatorski, 224; D. Forner, 236; J. Marshall, 223; K. Schiller, 221; O. Hansen, 218.

equipment operators!

Here's a man's boot every step of the way! Rugged, handsome, ready for a rough day's work anytime. Easy on the feet, too. Stop by—try on Pecos by Red Wing and be convinced!



RED WING

VOGEL'S & FOSTER'S

Ph. 475-1606 Chelsea, Mich.



STATE FFA OFFICER CANDIDATE: Victor Vercheréau, past-president of the Chelsea Chapter of Future Farmers of America and 1978 graduate of Chelsea High school, was chosen as a candidate from Region II for a state office. Election of officers will occur March 21-23 in Lansing during the state convention.

Nite Owl League

Standings as of Feb. 26

Hanco Sports Center	120	55
Thompson's Pizza	119	56
H & R Farms	101	74
Parts Peddler	100	75
K. of C.	97	78
A. D. Mayer	95	80
Na Yu Boutique	87	88
HRWS Farms	84	91
Fitzsimmons	80	95
Norm's Body Shop	79	96
Cavanaugh Lake Store	75	100
Chelsea Lions Club	70	105
Chelsea Automotive	70	105
Team No. 14	47	128

600 series: D. Bycraft, 502; G. Huehl, 500; O. Hansen, 594; B. Pagliarini, 585; D. Clouse, 509; J. Bulick, 538; D. Thompson, 553.

Over 200: G. Huehl, 203; D. Bycraft, 204; O. Hansen, 223; B. Pagliarini, 204, 201; J. Bulick, 220; D. Thompson, 200.

SCHOOL LUNCH MENU

Week of March 5-9

JV Cagers Rally To Nip Saline, 44-43

It was a game of the great thaw. Junior Bulldogs' offense played with numb fingers in the first quarter and came up with an icy figure of zero baskets against the piping hot Saline Hornets last Friday.

Only the Chelsea defense was able to keep the score from being blank on the home side, slipping in two free throws before the first quarter ended.

Entering the second stanza with a 2-10 disadvantage was enough to spark a fire under the Chelsea scorers. Their fingers of ice changed to burning paws as they outscored the Hornets, 15-14, and crept closer to a 44-43 victory—their eighth consecutive win of the year.

Little Bulldogs shot a poor 32 percent from the floor. "It was the lowest percent we've had in the past six games but the defense and hustle of everyone made up the difference against a fine Sa-

line team," Coach Jon Schaffner commented.

Saline entered the game with Chelsea sporting an 11-game winning streak. The Hornets are one game ahead of the junior Bulldogs with one game to play.

Pushing harder and harder, Chelsea came within two points of a lead by the third quarter's end, outscoring Saline, 14-8. The junior Bulldogs then topped Saline, 13-11, in the final stanza for the win.

Karl Albrecht again displayed his versatile skills with high marks in nearly all categories. He led in scoring with 16 points, collected eight rebounds, five steals, and two blocked shots.

Riemenschneider followed closely in scoring with 15; Laraz, five; and Mark Steinaway, four.

"Laraz and Steinaway did a super defensive job on Jim Phelps, Saline's leading scorer, by holding

Lenten Pot-Luck Slated at North Lake Methodist Church

A Lenten pot-luck, followed by the showing of "Carrie, The Lives She's Touched," will be held Wednesday, March 7 at North Lake United Methodist church at 6:30 p.m.

Hosting the new color motion picture will be Cliff Barrows, George Beverly Shea, Evie Tornquist, Ted Smith, the Bill Gaither Trio, and film star Jeannette Clift.

Beverages and rolls will be provided. Bring a dish to pass and table service.

him to four points all night," Schaffner reported.

Top Chelsea rebounder Riemenschneider with 10. Laraz added five and Steinaway, three. Laraz contributed five steals, Carl Schwarze, four; Sean Peterson, three; and Riemenschneider, three. Peterson was good for two blocked shots.

Chelsea travels to Lincoln on Friday, March 2 for the final SEC game.

First Print Patent Issued to H. J. Heinz

The first print patent in the United States was issued on March 7, 1893, to the H. J. Heinz Co., Pittsburgh, Pa., for its special advertising symbol. The print was issued in the shape of a pickle and advertised Heinz's preserves, celery sauce and ketchup. The famed Heinz industry began in the basement of H. J. Heinz's childhood home, which is now one of the many historic structures which make up Greenfield Village, Dearborn.

NOTICE TO OUR PATIENTS

Internal Medicine Group of Ann Arbor, P. C., has opened a second office in Chelsea at Chelsea Hospital Specialty Clinic. For appointment call 971-6572.

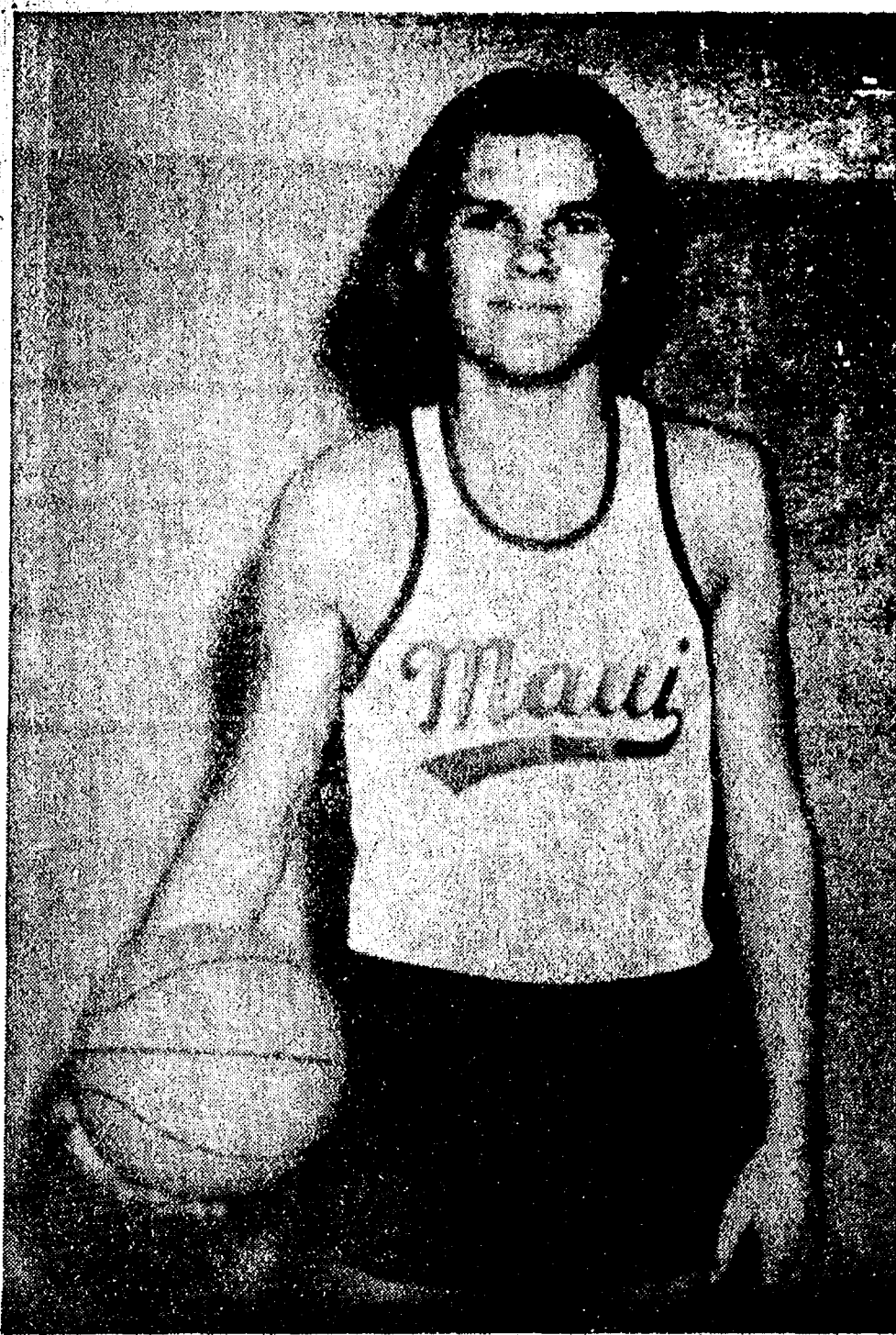
F. S. van Reesema, M.D.

ONE STEP UP SHOP

New Fashions from

- ★ HANG TEN
- ★ ORGANICALLY GROWN
- ★ BOBBIE BROOKS
- ★ GARLAND
- ★ LEVI'S, and more!

DOWNSTAIRS AT DANCER'S



FIRST TEAM CAGER: Charlie Bridges, leading the Chelsea varsity basketball squad in scores and rebounds, was one of five athletes honored Monday evening, Feb. 28, when he was chosen for the Southeastern Conference first team. Bridges, a 6'2" senior was selected along with Steve Barnes of Milan, Mark James of Saline, Henry Morley of Brighton, and Duane Ridenour of Novi. Bulldog Coach Robin Raymond praised Bridges for his leadership abilities and dedication to the team. "When co-captain Jesse Curn was hurt earlier this year, Charlie took over and pulled the team together. His biggest asset is in how hard he works. It is easy to say that he is the hardest working member on the team," he commented. Bridges, a guard, has averaged 13 points and 10 rebounds a game, and a total of 28 steals to lead the team in all those areas. While his statistics have been consistent through this season, they are notably improved from last year when he averaged only four points a game and started in just three of 22 games. A second Bulldog, Jeff Dils, received honorable mention during the SEC league meeting. Named to the second team were Craig Bachelor, Brighton; Rich Close, Brighton; Dave Pisha, Novi; Tyrone Pope, Milan; and Jim Vaughan, Dexter. Bridges is the first Bulldog to be named to the SEC first team since Randy Guenther was selected for the 1974-75 year.

Macrame Class Offered By WCC

Washtenaw Community College is offering two, two-session classes in the ancient craft of macrame for interested members of the community beginning in early March.

The class, offered on Friday, March 2 and 9 or Wednesday, March 14 and 21, will provide instruction in various knots, techniques, materials, and designs for making belts, wall-hangings, plant holders and hammocks. "Creativity, inventiveness and enjoyment will be stressed and materials will be provided," explains

WCC crafts instructor Zane Olukains.

The Friday classes will meet in the afternoons from 1:30 to 4 p.m. The Wednesday sessions will meet from 7 to 9 p.m. A \$10 fee is charged to cover materials. In-district senior citizens are invited to participate at no charge.

The classes will meet in the Ypsilanti Center of the College at 411 Florence. Advanced registration is requested by calling the Center at 482-2230.

Subscribe today to The Standard!

Auto-Owners Insurance claims service. It's our claim to fame.

In 60 years, Auto-Owners has grown from a small car insurance company to a major company offering protection for all your personal and business needs. And we didn't get there by being slow or tough when it comes to claims.

Auto-Owners reputation was built on having the fastest, fairest claims

service possible. A claim service that was designed with just one thing in mind: you!

Just ask anyone who's ever had a claim through Auto-Owners.

Just ask us about your insurance needs. Whatever it is—life, home, car, business—we think you'll claim we do better, too.



Auto-Owners Insurance

You can't find a better name for fast, fair claims service.

MAYER AGENCY
OF SPRINGER-KLEINSCHMIDT AGENCY, INC.
Phone 475-8689 Chelsea, Michigan

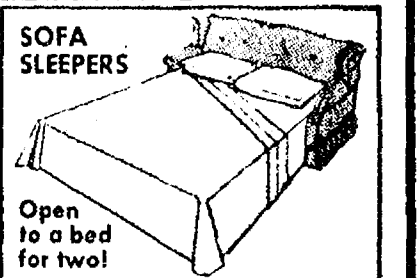
TRUCKLOAD SALE

6 Luxury Styles
SOFAS AND SOFA SLEEPERS
Traditional and Early American

SOFAS
\$439
\$499 VELVETS

SOFA SLEEPERS
\$499 FULL SIZE
\$559 QUEEN SIZE AND QUILTED FULL SIZE

NEW FASHION FABRICS
Long wear, easy care nylon in florals, prints, plaids plus Herculan® olefin plaids, plains



QUALITY YOU CAN COUNT ON!
Bench made, custom crafted Grifflaw sofas and sleepers feature oak frames, deep coil springs, soft polyfoam and polyester cushioning. Grifflaw sofa sleepers are complete with luxurious polyfoam mattresses.

SPECIAL ORDERS TOO ON FURNITURE BY

grifflaw

2-Pc. Livingroom Group
Nylon Cover
Gold Color
Foam Cushions
REG. \$700.00
NOW ONLY \$349.00
Save \$351.00
One Only—Shop Early!

SWIVEL ROCKER
Velvet Cover
REG. \$149.95
NOW \$128.00
Save \$21.95

RECLINERS
Many Styles and Covers To Choose From.
Priced from **\$148.00**
Shop Early and Save \$\$\$

Modern Styled **LOVESEAT**
Velvet Cover
Foam Cushions
Reg. \$700.00
NOW \$459.00
Save \$241.00
One Only—Shop Early!

Enjoy Truckload Sale savings today with your convenient Gambles credit!

90 DAYS Same As Cash!

GO Gambles
110 N. Main St., Chelsea, Mich.
Store Hours: 8:30 to 5:30 Thurs. & Sat.
Fri., 8:30 to 8:30 for your convenience.

Polly's
MASTERMARKETS

5 CONVENIENT
LOCATIONS

201 PARK AVE. V.L.
1821 SPRING ARBOR RD.
960 NORTH WEST AVE.
3152 EAST MICHIGAN
1011 M-52 CHELSEA

Coming
Soon

DRIVE

stain fighting
detergent

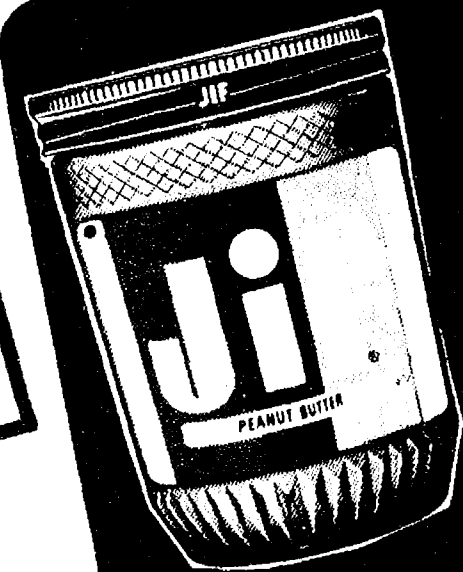
49 OZ.
BOX

SAVE 51¢ WITH COUPON
25¢ OFF LABEL

DRIVE

DETERGENT

99¢



28
OZ.

SAVE 20¢ WITH COUPON
JIF
**PEANUT
BUTTER**

\$1.39

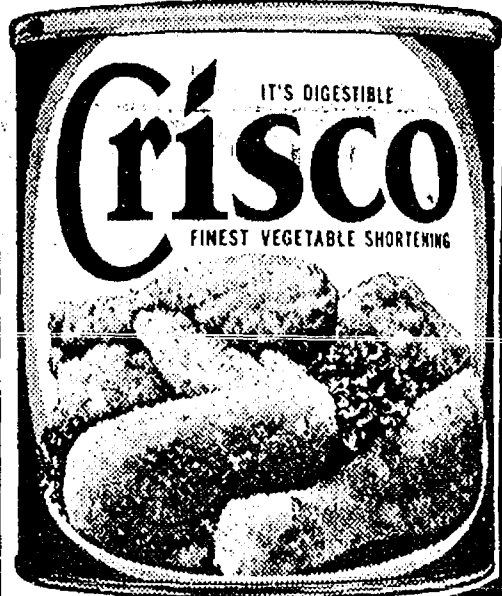


16 OZ.
PKG.

SAVE 30¢ WITH COUPON
SOFT

**CHIFFON
MARGARINE**

49¢



SAVE 20¢ WITH COUPON

**CRISCO
SHORTENING**

\$1.69

3 LB.



BUY 3 SAVE 54¢ WITH COUPON

**HI-C
FRUIT DRINKS**

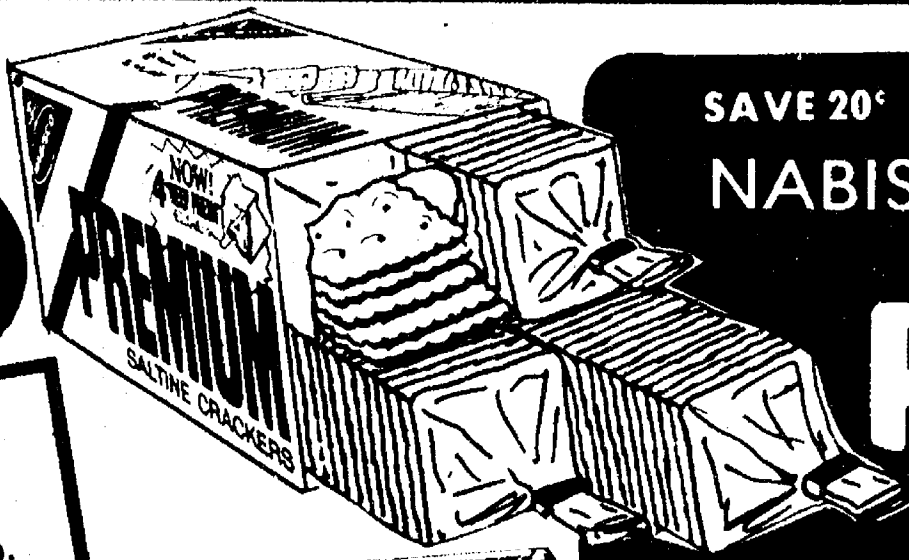
46 OZ.

39¢

Polly's
MASTERMARKETS

5 CONVENIENT
LOCATIONS

201 PARK AVE. V.L.
1821 SPRING ARBOR RD.
960 NORTH WEST AVE.
3152 EAST MICHIGAN
1011 M-52 CHELSEA



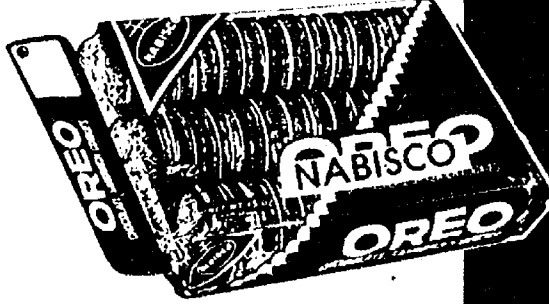
SAVE 20%
NABISCO

PREMIUM

SALTINE
CRACKERS

16 OZ. BOX

67¢



OREOS

15 OZ. PKG.

99¢

**COMING
SOON!!**

ANOTHER POLLYS
LOCATION ON
3152 E. MICHIGAN

**CRACKER BARREL
PRICES!!**

SUNSHINE

HONEY GRAHAMS

SUNSHINE

HYDROX COOKIES

DOLE JUICE PAK

PINEAPPLE

LIBBY

FRUIT NECTARS

PETER PIPER FRESH

KOSHER DILLS

OCEAN SPRAY

GRAPEFRUIT JUICE

GLAD

TRASH BAGS

SNOWS NEW ENGLAND

CLAM CHOWDER

MR. COFFEE

COFFEE FILTERS

BUMBLE BEE CHUNK LIGHT

TUNA in OIL

HELLMANS

TARTAR SAUCE

16 OZ.

69¢

15 OZ.

79¢

20 OZ.

57¢

6 PK. CANS

99¢

48 OZ.

\$1.09

48 OZ.

79¢

10 CT.

99¢

15 OZ.

79¢

50 CT.

39¢

6 1/2 OZ.

63¢

2 6 OZ. FOR

89¢

FOLGERS

COFFEE

DOMINO

SUGAR

CHOCK FULL O' NUTS

COFFEE

RED

HAWAIIAN PUNCH

HEFTY

TRASH BAGS

CONTADINA

TOMATO PASTE

CONTADINA

TOMATO SAUCE

PILLAR ROCK

PINK SALMON

NEWLYWED

ENGLISH MUFFINS

LIQUID

WISK DETERGENT

HEFTY

TRASH BAGS

2 LB.

\$4.97

5 LB.

\$1.15

2 LB.

\$3.99

46 OZ.

53¢

10 CT.

99¢

2

12 OZ.

89¢

3

15 OZ.

\$1.00

15 1/2 OZ.

\$1.49

2

6 CT.

89¢

64 OZ.

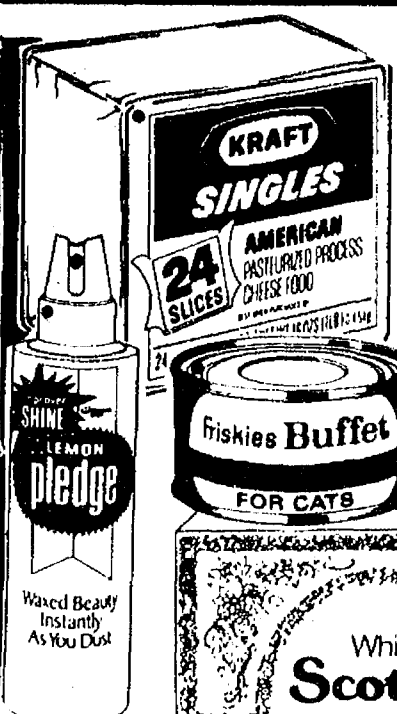
\$2.09

10 CT.

99¢

**SAVE
OVER
\$930**

WITH ALL POLLY'S
COUPONS!!



Polly's
MASTERMARKETS

5 CONVENIENT
LOCATIONS

201 PARK AVE. V.L.
1821 SPRING ARBOR RD.
960 NORTH WEST AVE.
3152 EAST MICHIGAN
1011 M-52 CHELSEA

SAVE 50¢ WITH IN STORE COUPON
MAXWELL HOUSE

**GROUND
COFFEE**

2 LB. CAN

\$459

SAVE 24¢ WITH IN STORE COUPON
BETTY CROCKER

**BROWNIE
SUPREME**

23 1/2 OZ.

99¢

SAVE 26¢ WITH IN STORE COUPON
WIN SCHULER

**BAR
SCHEEZE**

10 OZ.

\$119

SAVE 55¢ WITH IN STORE COUPON
FRISKIES

**BUFFET
CAT FOOD**

5

6 1/2 OZ.

\$100

SAVE 43¢ WITH IN STORE COUPON
LIQUID PUMP

**LEMON
PLEDGE**

12 OZ.

99¢

SAVE 15¢ WITH IN STORE COUPON
ASSORTED FLAVORS

**JELL O
GELATIN**

5

3 OZ.
PKGS.

\$100

SAVE 44¢ WITH IN STORE COUPON
KRAFT

**MACARONI &
CHEESE**

4

7 1/4 OZ.
PKGS.

\$100

SAVE 47¢ WITH IN STORE COUPON
KRAFT 24 SLICE

**AMERICAN
SINGLES**

16 OZ.

\$149

SAVE 14¢ WITH IN STORE COUPON
SCOTTIES

**FACIAL
TISSUE**

200 CT.

49¢

SAVE 22¢ WITH IN STORE COUPON
SUNSWET

**PRUNE
JUICE**

40 OZ.

79¢

SAVE 54¢ WITH IN STORE COUPON
DEMINGS RED

**SOCKEYE
SALMON**

15 1/2 OZ.

\$199

SAVE 50¢ WITH IN STORE COUPON
CAINS

**POTATO
CHIPS**

16 OZ.

99¢



10¢ OFF LABEL

**OXYDOL
DETERGENT**

49 OZ.

\$149



10¢ OFF LABEL

**SPIC and
SPAN**

54 OZ.

\$139

4¢ OFF LABEL

**AJAX
CLEANSER**

14 OZ.

27¢



10¢ OFF LABEL

**COAST
BATH SOAP**

2 PAK/10 OZ.

78¢

6 OZ. FREE!
**MINUTE
RICE**

32 oz.

\$159

NEW! KELLOGG'S

**DANISH
RINGS**

12 OZ.

79¢

KRAFT
**HALF MOON
COLBY**

10 OZ.

\$119

BROADCAST "BIG MEAL"
**BEEF
HASH**

15 1/2 OZ.

89¢

AUNT HATTIE
**HOMESTYLE
BREAD**

2

24 OZ.
LOAVES

\$109

SCHAFFERS
**HOLLYWOOD
BREAD**

2

16 OZ.
LOAVES

89¢

ALPINE BAKERY
**ANGEL
FOOD CAKE**

12 OZ.

79¢

Polly's
MASTERMARKETS

**FRESH
GROUND
DAILY!**

**5 CONVENIENT
LOCATIONS**

201 PARK AVE. V.L.
1821 SPRING ARBOR RD.
960 NORTH WEST AVE.
3152 EAST MICHIGAN Coming Soon
1011 M-52 CHELSEA

ALL BEEF

HAMBURG

\$1.35
LB.

FARMER PEETS

**SPARE
RIBS**

SMALL SIZE

\$1.29
LB.

**SAVE
30¢
POUND**

FARMER PEETS
**PLAYTIME
FRANKS**

LB. **\$1.29**

FARMER PEETS
**SLICED
BOLOGNA**

LB. **\$1.29**

FARMER PEETS
**CHIPPED
MEATS**

3 OZ. **49¢**

FARMER PEETS
**CORN
BEEF**

LB. **\$1.19**

SUPERIOR
**FISH n'
BATTER**

LB. **\$1.29**

SUPERIOR
**FISH
STIXS**

LB. **99¢**

SAVE 40¢ WITH IN-STORE COUPON

OSCAR
MAYER

**SLICED
BACON**

**Oscar
Mayer**

\$1.79

1 LB.
PKG.



Polly's
MASTERMARKETS

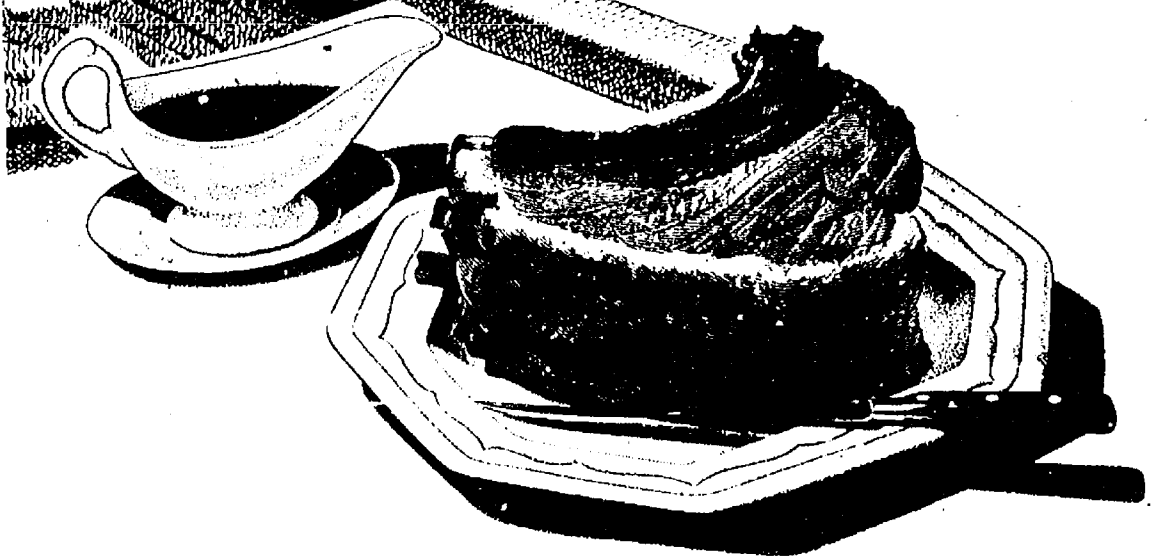
5 CONVENIENT
LOCATIONS

201 PARK AVE. V.I.
1821 SPRING ARBOR RD.
960 NORTH WEST AVE.
3152 EAST MICHIGAN Coming Soon
1011 M-52 CHELSEA

**SAVE
30¢
POUND**

CHOICE BEEF
BLADE CUT
CHUCK ROAST

LB. **\$1.29**



CHOICE BEEF
**CHUCK
STEAK**

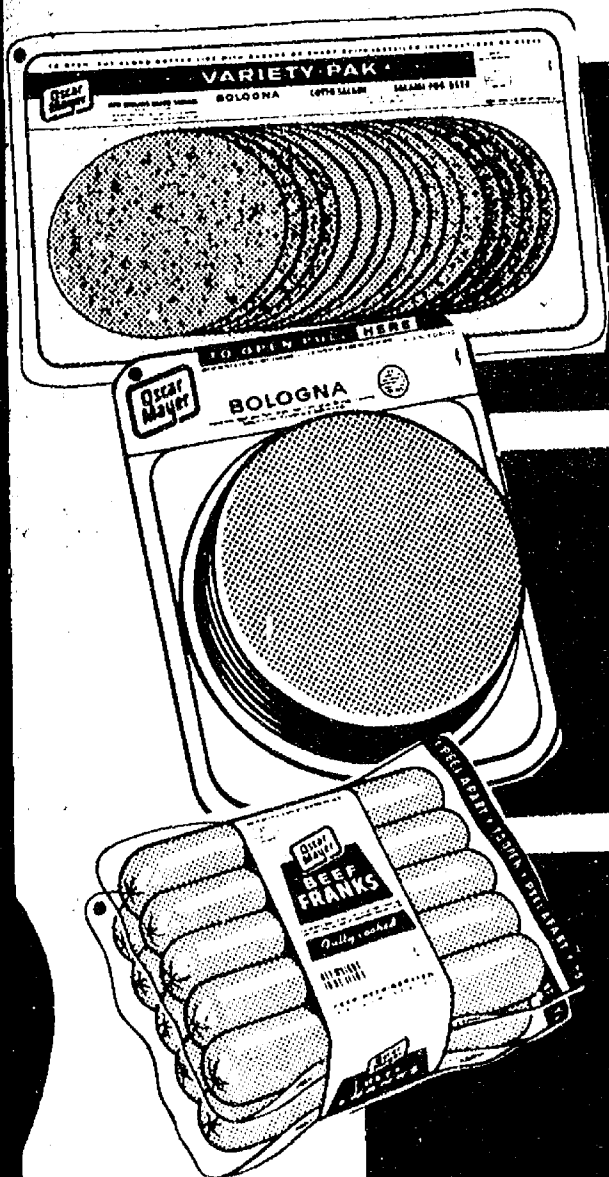
LB. **\$1.39**

CHOICE BEEF
**ARM CUT
ROAST**

LB. **\$1.49**

CHOICE BEEF BONELESS
**CHUCK
ROAST**

LB. **\$1.49**



SAVE 40¢ WITH IN-STORE COUPON
OSCAR MAYER
VARIETY PAK

12 oz. **\$1.69**

SAVE 40¢ WITH IN-STORE COUPON
OSCAR MAYER
BOLOGNA

LB. **\$1.59**

SAVE 40¢ WITH IN-STORE COUPON
OSCAR MAYER
BEEF FRANKS

LB. **\$1.49**

CHOICE BEEF
**STANDING
RIB ROAST**

4TH THRU 7TH RIB

LB. **\$1.89**

EXTRA LEAN
**STEW
MEAT**

LB. **\$1.69**

FANCY
**CUBE
STEAKS**

LB. **\$1.99**

FRESH
**BEEF
LIVER**

LB. **59¢**

CHOICE BEEF WHOLE
**NEW YORK
STRIPS**

LB. **\$2.49**

10/12 LB. AVG... SLICED FREE!

U.S. NO. 1 MICHIGAN

DELICIOUS APPLES

3 LB.
BAG

69¢

Polly's
MASTERMARKETS

5 CONVENIENT
LOCATIONS

201 PARK AVE. V.L.
1821 SPRING ARBOR RD.
960 NORTH WEST AVE.
3152 EAST MICHIGAN
1011 M-52 CHELSEA

Coming
Soon

SNO WHITE
MUSHROOMS

LB. 99¢

ZESTY
BEAN SPROUTS

8 OZ. 39¢

FRESH
ALFALFA SPROUTS

4 OZ. 39¢

8 INCH
BOSTON FERNS

\$4.99

U.S. NO. 1

MICHIGAN POTATOES

10 LB.
BAG

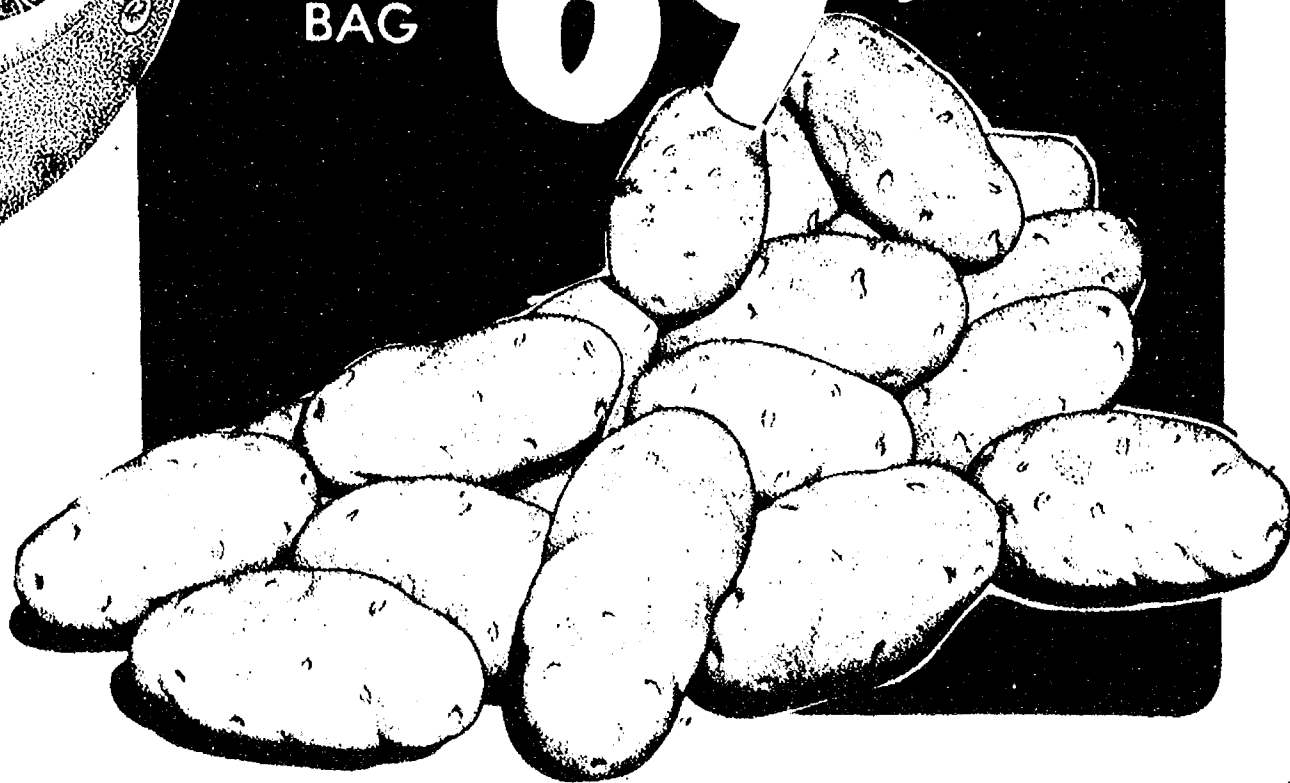
69¢

FLORIDA PINK or WHITE

GRAPEFRUIT

5 LB.
BAG

99¢





BORDEN
PRO-LINE
2% LOW FAT
MILK

HALF
GALLON

69¢



BORDEN
LITE LINE
YOGURT
3 8 OZ. FOR **99¢**

5 CONVENIENT
LOCATIONS
201 PARK AVE. V.I.
1821 SPRING ARBOR RD.
960 NORTH WEST AVE.
3152 EAST MICHIGAN Coming Soon
1011 M-52 CHELSEA

SAVE UP TO \$1.00 WITH IN-STORE COUPON

BORDEN
Old Fashioned
ICE CREAM

HALF GALLON
ROUNDS

\$1.39



**MORTON
DINNERS**

CHICKEN, TURKEY, BEEF,
SALISBURY STEAK or MEAT LOAF

2 11 OZ.
PKGS. **\$1.00**



BOOTH
GOLDEN BATTER

**THICK
STICKS**

\$1.39

14 OZ.

BORDEN
JET BAR STIX

12 PAK **99¢**

BORDEN
SUNDAE CUPS

6 PAK **89¢**

SCOT LAD WHIPPED
TOPPING

9 OZ. **39¢**

SCOT LAD
PIE SHELLS

2 PAK **39¢**

Polly's
MASTERMARKETS

Exclusive Offer!

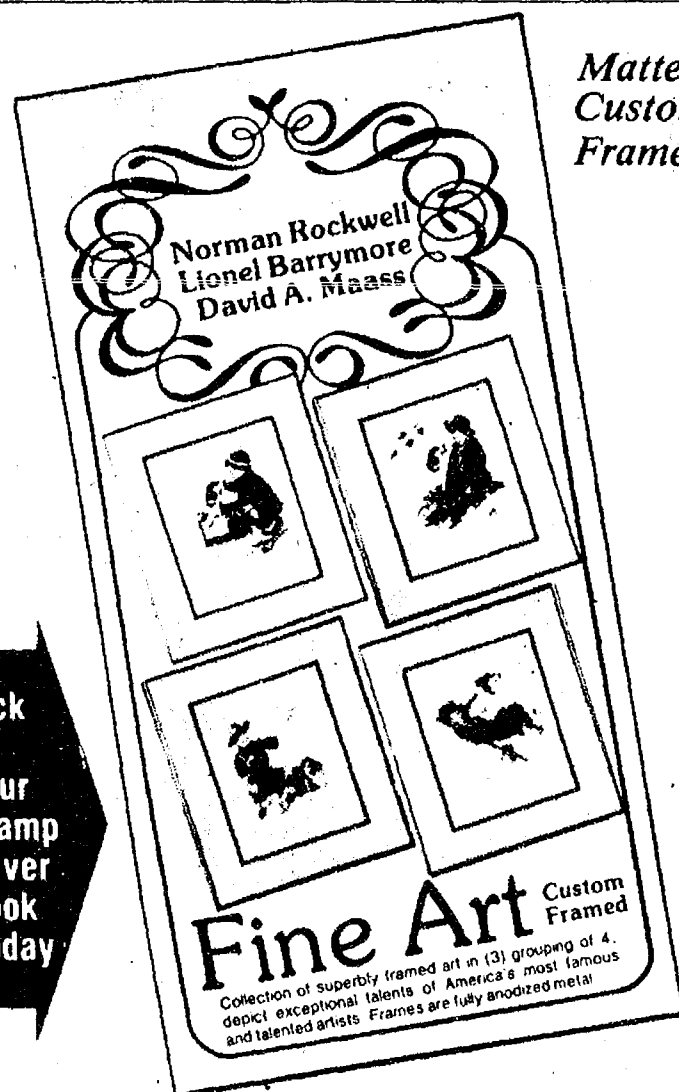
SAVE OVER **50%** OFF
REG. PRICE



Your
Choice
of
Artist

Norman Rockwell

Long beloved for his human portrayal of the warmth and spirit of American life, he has memorably captured the tender love and whimsical solicitude in the framed series of Rockwells "PUPPY LOVE."

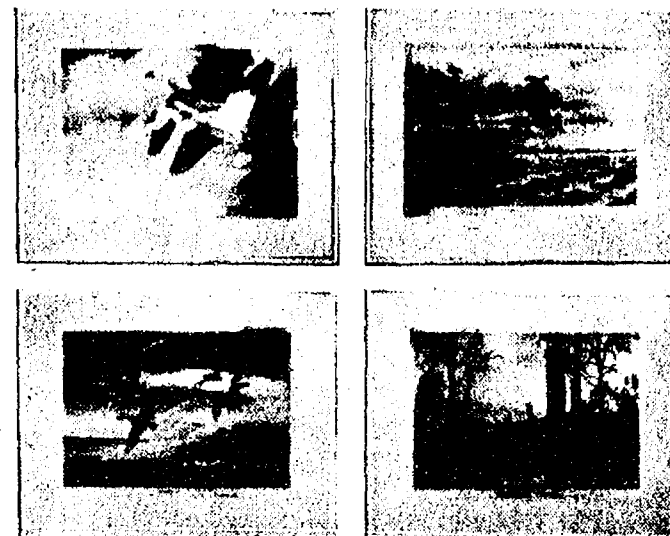


Matted &
Custom
Framed



Lionel Barrymore

A uniquely styled artist who has captured the hearts of art lovers everywhere. A true inspiration to young artists with his delightful contrast of dimensional paintings at their best in his new series "HARBOR TOWN."



David A. Maass

Featuring Sport 'En Art. David Maass is recognized nationally for his wildlife paintings to the extent that in 1974 he received double national honors, winning the Federal Duck Stamp Design award and Ducks Unlimited Artist of the Year. David Maass presents his exciting and beautiful series, "WINGS."

**COLLECT
30 STAMPS**

**FOR YOUR
4-PC. GROUPING**
(29 Stamps at 99¢ each
= \$28.71 plus tax)

YOUR FIRST **99¢** FINE ART STAMP
FREE

WHEN YOU TURN IN YOUR
COMPLETED RESERVATION CARD

**4-Piece
Fine Art**
CUSTOM FRAMED GROUPING
AT SUBSTANTIAL
SAVINGS!